

Phospho-ELK1-S383 pAb



Catalog Number: 166408

General Information

Product name:

Phospho-ELK1-S383 pAb

Immunogen:

Applications:

WB, IHC

Specificity:

Human, Mouse, Rat

Antibody description:

Polyclonal antibody to Phospho-ELK1-S383

Properties

Preparation:

Antigen: A phospho specific peptide corresponding to residues surrounding S383 of human ELK1

Formulation:

PBS with 0.02% sodium azide, 50% glycerol, pH7.3.

Storage:

Store at -20°C. Avoid freeze / thaw cycles.

Clonality:

Polyclonal

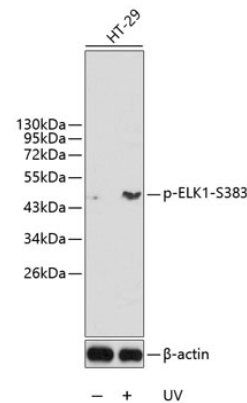
Ig Type:Rabbit IgG

Applications

WB 1:500 - 1:2000

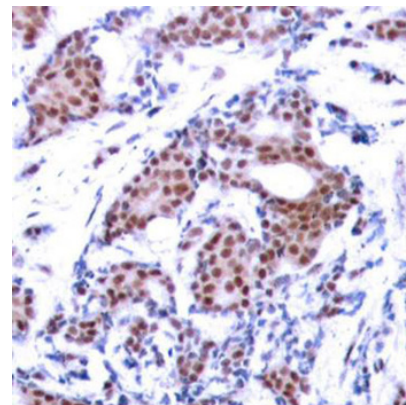
IHC 1:50 - 1:100

Validations



Western blot - Phospho-ELK1-S383 pAb

Western blot analysis of extracts from HT29 cells, using Phospho-ELK1-S383 antibody .Secondary antibody: HRP Goat Anti-Rabbit IgG (H+L) at 1:10000 dilution.Lysates/proteins: 25ug per lane.Blocking buffer: 3% BSA.



Immunohistochemistry - Phospho-ELK1-S383 pAb

Immunohistochemistry of paraffin-embedded human breast carcinoma using Phospho-ELK1-S383 antibody .