

# Phospho-AKT1-Y315/AKT2-Y316/AKT3-Y312 pAb



Catalog Number: 166380

## General Information

### Product name:

Phospho-AKT1-Y315/AKT2-Y316/AKT3-Y312 pAb

### Immunogen:

### Applications:

WB, IHC, IF

### Specificity:

Human, Mouse, Rat

### Antibody description:

Polyclonal antibody to Phospho-AKT1-Y315/AKT2-Y316/AKT3-Y312

## Properties

### Preparation:

Antigen: A phospho specific peptide corresponding to residues surrounding Y315 of human AKT1

### Formulation:

PBS with 0.02% sodium azide, 50% glycerol, pH7.3.

### Storage:

Store at -20°C. Avoid freeze / thaw cycles.

### Clonality:

Polyclonal

**Ig Type:**Rabbit IgG

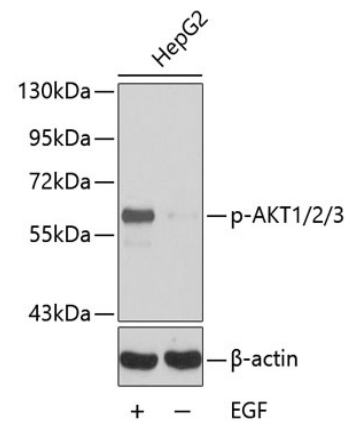
## Applications

WB 1:500 - 1:1000

IHC 1:50 - 1:100

IF 1:100 - 1:200

## Validations



Western blot - Phospho-AKT1-Y315/AKT2-Y316/AKT3-Y312 pAb

Western blot analysis of extracts HepG2 cells using Phospho-AKT1-Y315/AKT2-Y316/AKT3-Y312 antibody .HepG2 cells were treated by EGF (100 ng/ml) at 37u2103 for 30 minutes after serum-starvation overnight.Secondary antibody: HRP Goat Anti-Rabbit IgG (H+L) at 1:10000 dilution.Lysates/proteins: 25ug per lane.Blocking buffer: 3% BSA.