

# Phospho-DOK2-Y299 pAb



Catalog Number: 166370

## Product name

Phospho-DOK2-Y299 pAb

## Specificity

Human

## Antibody description

Polyclonal antibody to Phospho-DOK2-Y299

## Preparation

Antigen: A phospho specific peptide corresponding to residues surrounding Y299 of human DOK2

## Formulation

PBS with 0.02% sodium azide, 50% glycerol, pH7.3.

## Storage

Store at -20°C. Avoid freeze / thaw cycles.

## Clonality

Polyclonal

## Ig Type

Rabbit IgG

## Applications

WB, IHC, IF

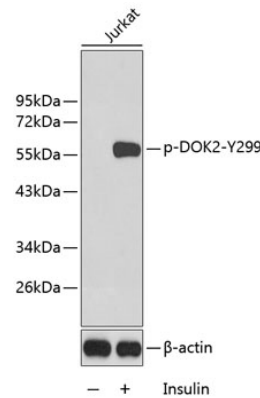
## Dilutions

WB 1:500 - 1:2000

IHC 1:50 - 1:100

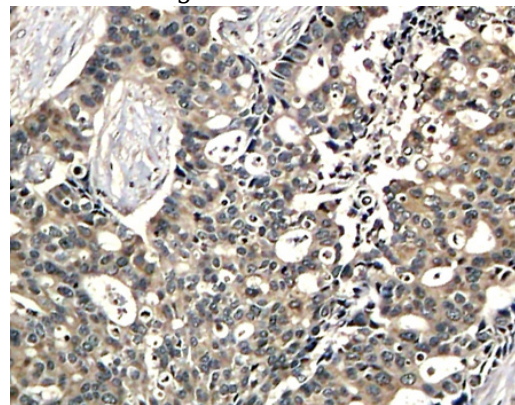
IF 1:100 - 1:200

## Validations



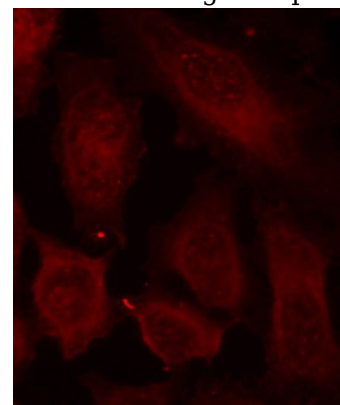
Western blot - Phospho-DOK2-Y299 pAb

Western blot analysis of extracts from Jurkat cells using Phospho-DOK2-Y299 antibody. Secondary antibody: HRP Goat Anti-Rabbit IgG (H+L) at 1:10000 dilution. Lysates/proteins: 25ug per lane. Blocking buffer: 3% BSA.



Immunohistochemistry - Phospho-DOK2-Y299 pAb

Immunohistochemistry of paraffin-embedded human breast carcinoma using Phospho-DOK2-



Y299 antibody

Immunofluorescence - Phospho-DOK2-Y299 pAb

# Phospho-DOK2-Y299 pAb



Catalog Number: 166370

---

Immunofluorescence analysis of methanol-fixed

HeLa cells using Phospho-DOK2-Y299 antibody .