

# Phospho-DOK1-Y398 pAb



Catalog Number: 166369

## Product name

Phospho-DOK1-Y398 pAb

## Specificity

Human, Mouse, Rat

## Antibody description

Polyclonal antibody to Phospho-DOK1-Y398

## Preparation

Antigen: A phospho specific peptide corresponding to residues surrounding Y398 of human DOK1

## Formulation

PBS with 0.02% sodium azide, 50% glycerol, pH7.3.

## Storage

Store at -20°C. Avoid freeze / thaw cycles.

## Clonality

Polyclonal

## Ig Type

Rabbit IgG

## Applications

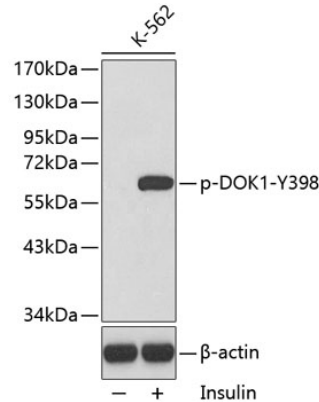
WB, IHC

## Dilutions

WB 1:500 - 1:2000

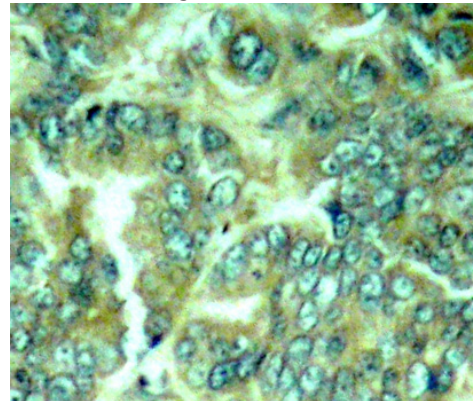
IHC 1:50 - 1:100

## Validations



Western blot - Phospho-DOK1-Y398 pAb

Western blot analysis of extracts from K562 cells using phospho-DOK1-Y398 antibody. Secondary antibody: HRP Goat Anti-Rabbit IgG (H+L) at 1:10000 dilution. Lysates/proteins: 25ug per lane. Blocking buffer: 3% BSA.



Immunohistochemistry - Phospho-DOK1-Y398 pAb

Immunohistochemistry of paraffin-embedded human breast carcinoma using Phospho-DOK1-Y398 antibody.