

Phospho-MAP3K5-S966 pAb



Catalog Number: 166356

Product name

Phospho-MAP3K5-S966 pAb

Specificity

Human, Mouse

Antibody description

Polyclonal antibody to Phospho-MAP3K5-S966

Preparation

Antigen: A phospho specific peptide corresponding to residues surrounding S966 of human MAP3K5

Formulation

PBS with 0.02% sodium azide, 50% glycerol, pH7.3.

Storage

Store at -20°C. Avoid freeze / thaw cycles.

Clonality

Polyclonal

Ig Type

Rabbit IgG

Applications

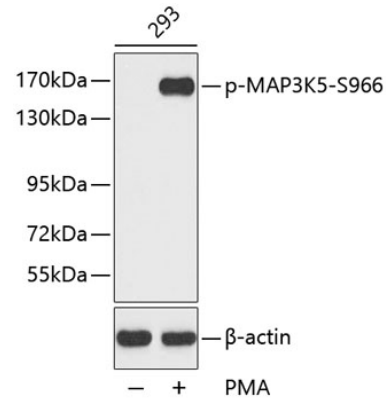
WB, IHC

Dilutions

WB 1:500 - 1:2000

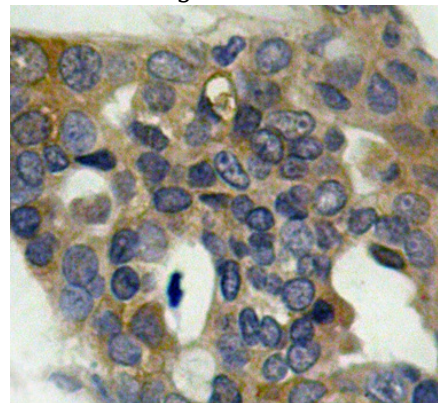
IHC 1:50 - 1:100

Validations



Western blot - Phospho-MAP3K5-S966 pAb

Western blot analysis of extracts from 293 cells, using Phospho-MAP3K5-S966 antibody. Secondary antibody: HRP Goat Anti-Rabbit IgG (H+L) at 1:10000 dilution. Lysates/proteins: 25ug per lane. Blocking buffer: 3% BSA.



Immunohistochemistry - Phospho-MAP3K5-S966 pAb

Immunohistochemistry of paraffin-embedded human breast carcinoma using Phospho-MAP3K5-S966 antibody.