

SLC30A1 Polyclonal Antibody



Catalog Number: 166257

Product name

SLC30A1 Polyclonal Antibody

Specificity

Human, Mouse, Rat

Antibody description

Polyclonal antibody to SLC30A1

Preparation

Antigen: A synthetic peptide corresponding to a sequence within amino acids 250-350 of human SLC30A1 (NP_067017.2).

Formulation

PBS with 0.02% sodium azide, 50% glycerol, pH7.3.

Storage

Store at -20°C. Avoid freeze / thaw cycles.

Clonality

Polyclonal

Ig Type

Rabbit IgG

Applications

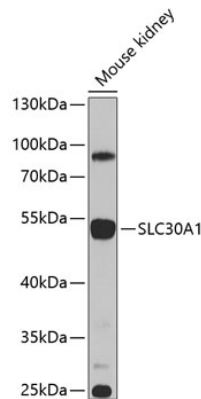
WB, IHC

Dilutions

WB 1:500 - 1:2000

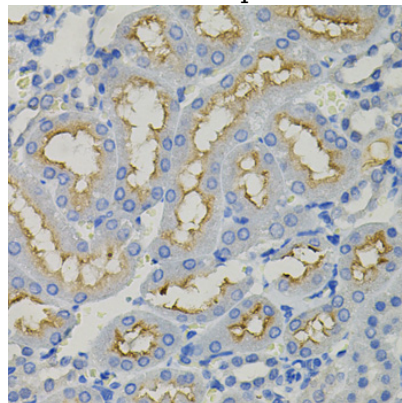
IHC 1:50 - 1:200

Validations



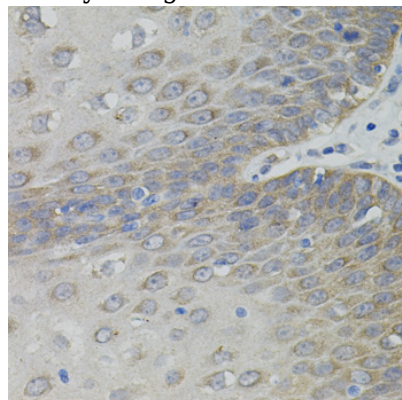
Western blot - SLC30A1 Polyclonal Antibody

Western blot analysis of extracts of mouse kidney, using SLC30A1 antibody at 1:1000 dilution. Secondary antibody: HRP Goat Anti-Rabbit IgG (H+L) at 1:10000 dilution. Lysates/proteins: 25ug per lane. Blocking buffer: 3% nonfat dry milk in TBST. Detection: ECL Enhanced Kit. Exposure time: 60s.



Immunohistochemistry - SLC30A1 Polyclonal Antibody

Immunohistochemistry of paraffin-embedded rat kidney using SLC30A1 antibody (40x lens).



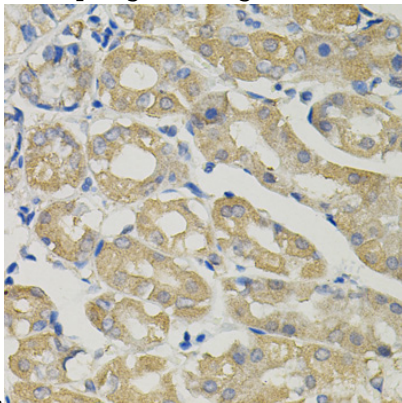
SLC30A1 Polyclonal Antibody



Catalog Number: 166257

Immunohistochemistry - SLC30A1 Polyclonal Antibody

Immunohistochemistry of paraffin-embedded human esophagus using SLC30A1 antibody (40x



lens).

Immunohistochemistry - SLC30A1 Polyclonal Antibody

Immunohistochemistry of paraffin-embedded human stomach using SLC30A1 antibody (40x lens).