

# ELP3 Polyclonal Antibody



Catalog Number: 166208

## Product name

ELP3 Polyclonal Antibody

## Specificity

Human, Mouse, Rat

## Antibody description

Polyclonal antibody to ELP3

## Preparation

Antigen: Recombinant fusion protein containing a sequence corresponding to amino acids 358-547 of human ELP3 (NP\_060561.3).

## Formulation

PBS with 0.02% sodium azide, 50% glycerol, pH7.3.

## Storage

Store at -20°C. Avoid freeze / thaw cycles.

## Clonality

Polyclonal

## Ig Type

Rabbit IgG

## Applications

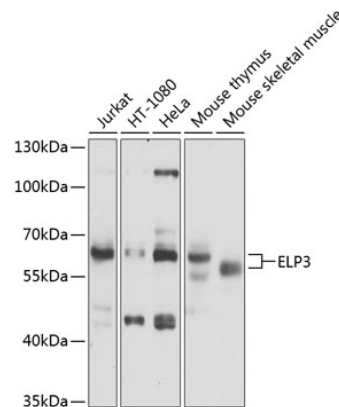
WB, IHC

## Dilutions

WB 1:500 - 1:2000

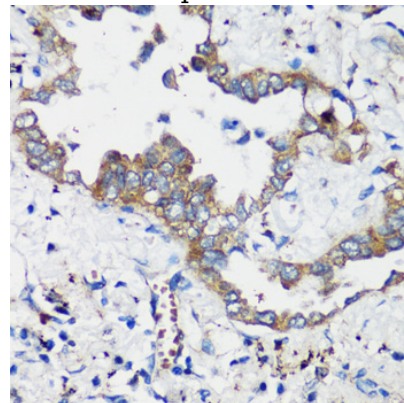
IHC 1:50 - 1:200

## Validations



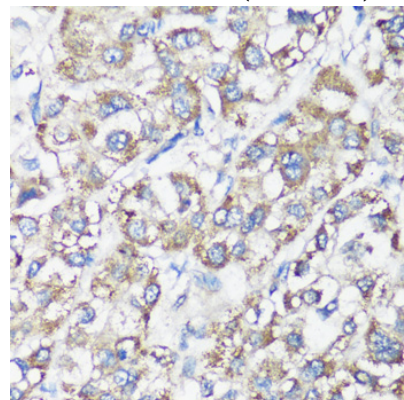
Western blot - ELP3 Polyclonal Antibody

Western blot analysis of extracts of various cell lines, using ELP3 antibody at 1:1000 dilution. Secondary antibody: HRP Goat Anti-Rabbit IgG (H+L) at 1:10000 dilution. Lysates/proteins: 25ug per lane. Blocking buffer: 3% nonfat dry milk in TBST. Detection: ECL Basic Kit. Exposure time: 10s.



Immunohistochemistry - ELP3 Polyclonal Antibody

Immunohistochemistry of paraffin-embedded human lung cancer using ELP3 antibody at dilution of 1:200 (40x lens).



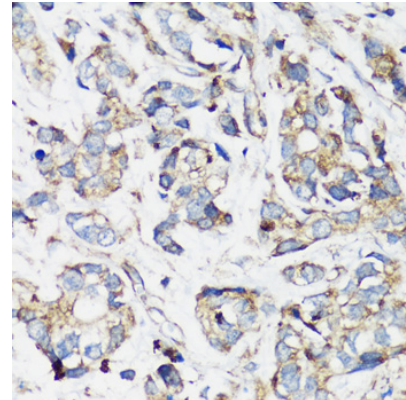
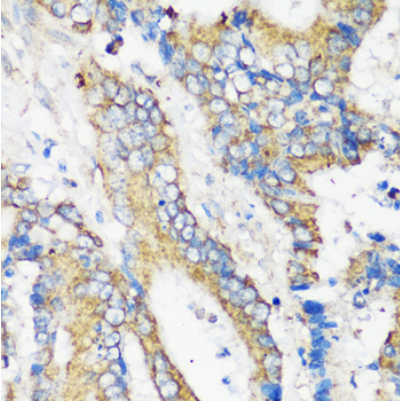
# ELP3 Polyclonal Antibody

Catalog Number: 166208

---

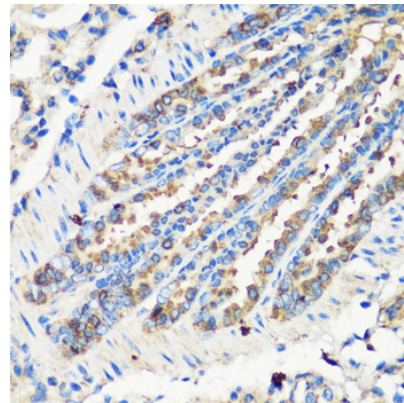
## Immunohistochemistry - ELP3 Polyclonal Antibody

Immunohistochemistry of paraffin-embedded human liver cancer using ELP3 antibody at dilution of 1:200 (40x lens).



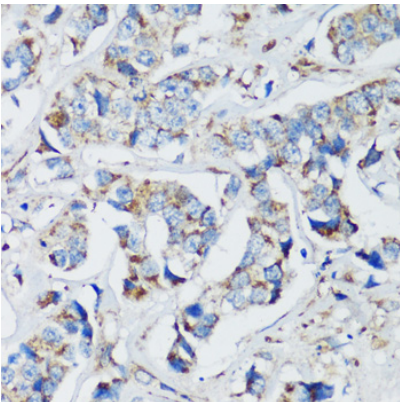
## Immunohistochemistry - ELP3 Polyclonal Antibody

Immunohistochemistry of paraffin-embedded human gastric cancer using ELP3 antibody at dilution of 1:200 (40x lens).



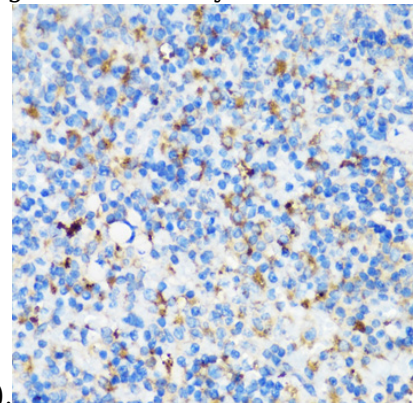
## Immunohistochemistry - ELP3 Polyclonal Antibody

Immunohistochemistry of paraffin-embedded human colon carcinoma using ELP3 antibody at dilution of 1:200 (40x lens).



## Immunohistochemistry - ELP3 Polyclonal Antibody

Immunohistochemistry of paraffin-embedded mouse lung using ELP3 antibody at dilution of



1:200 (40x lens).

## Immunohistochemistry - ELP3 Polyclonal Antibody

Immunohistochemistry of paraffin-embedded mouse spleen using ELP3 antibody at dilution of

## Immunohistochemistry - ELP3 Polyclonal Antibody

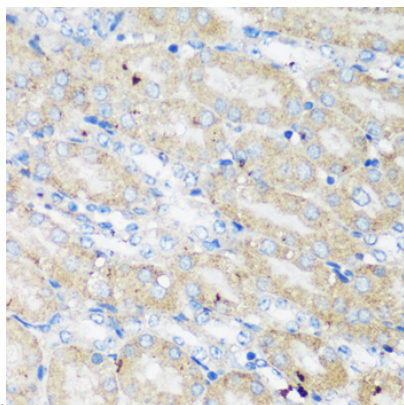
Immunohistochemistry of paraffin-embedded human breast cancer using ELP3 antibody at dilution of 1:200 (40x lens).

# ELP3 Polyclonal Antibody



Catalog Number: 166208

---



Immunohistochemistry - ELP3 Polyclonal Antibody

Immunohistochemistry of paraffin-embedded mouse kidney using ELP3 antibody at dilution of 1:200 (40x lens).

1:200 (40x lens).