

# PMAIP1 Polyclonal Antibody

Catalog Number: 166160

## Product name

PMAIP1 Polyclonal Antibody

## Specificity

Human, Mouse, Rat

## Antibody description

Polyclonal antibody to PMAIP1

## Preparation

Antigen: A synthetic peptide corresponding to a sequence within amino acids 1-54 of human PMAIP1 (NP\_066950.1).

## Formulation

PBS with 0.02% sodium azide, 50% glycerol, pH7.3.

## Storage

Store at -20°C. Avoid freeze / thaw cycles.

## Clonality

Polyclonal

## Ig Type

Rabbit IgG

## Applications

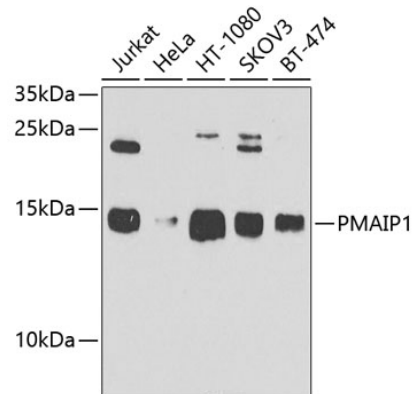
WB, IF

## Dilutions

WB 1:500 - 1:2000

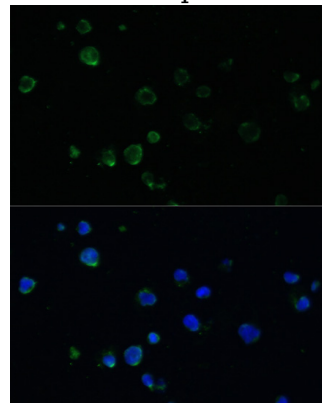
IF 1:50 - 1:200

## Validations



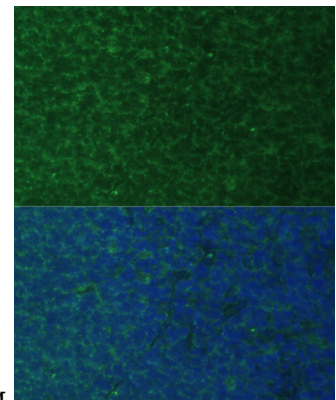
## Western blot - PMAIP1 Polyclonal Antibody

Western blot analysis of extracts of various cell lines, using PMAIP1 antibody at 1:1000 dilution. Secondary antibody: HRP Goat Anti-Rabbit IgG (H+L) at 1:10000 dilution. Lysates/proteins: 25ug per lane. Blocking buffer: 3% nonfat dry milk in TBST. Detection: ECL Basic Kit. Exposure time: 90s.



## Immunofluorescence - PMAIP1 Polyclonal Antibody

Immunofluorescence analysis of Jurkat cells using PMAIP1 antibody at dilution of 1:100. Blue: DAPI



for nuclear staining.

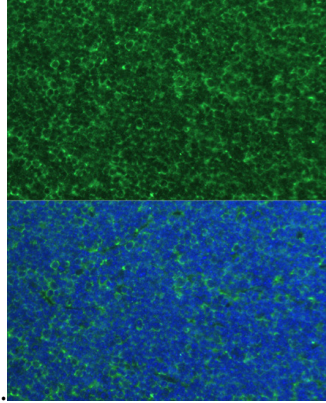
# PMAIP1 Polyclonal Antibody

Catalog Number: 166160

---

## Immunofluorescence - PMAIP1 Polyclonal Antibody

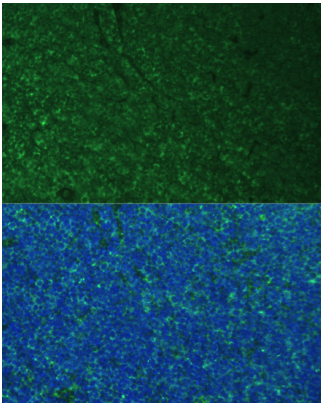
Immunofluorescence analysis of rat breast cells using PMAIP1 antibody at dilution of 1:100. Blue:



DAPI for nuclear staining.

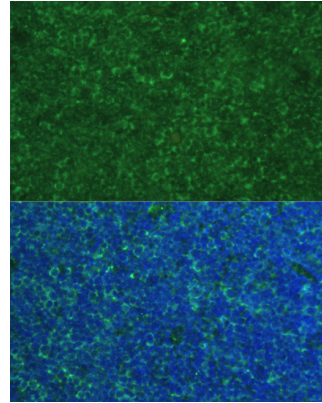
## Immunofluorescence - PMAIP1 Polyclonal Antibody

Immunofluorescence analysis of mouse breast cells using PMAIP1 antibody at dilution of 1:100. Blue: DAPI for nuclear staining.



## Immunofluorescence - PMAIP1 Polyclonal Antibody

Immunofluorescence analysis of mouse breast cells using PMAIP1 antibody at dilution of 1:100. Blue: DAPI for nuclear staining.



## Immunofluorescence - PMAIP1 Polyclonal Antibody

Immunofluorescence analysis of mouse breast cells using PMAIP1 antibody at dilution of 1:100. Blue: DAPI for nuclear staining.