

CAMKK1 Polyclonal Antibody



Catalog Number: 166041

Product name

CAMKK1 Polyclonal Antibody

Specificity

Human, Mouse

Antibody description

Polyclonal antibody to CAMKK1

Preparation

Antigen: A synthetic Peptide of human CAMKK1

Formulation

PBS with 0.02% sodium azide, pH7.3.

Storage

Store at 4°C. Avoid freeze / thaw cycles.

Clonality

Polyclonal

Ig Type

Rabbit IgG

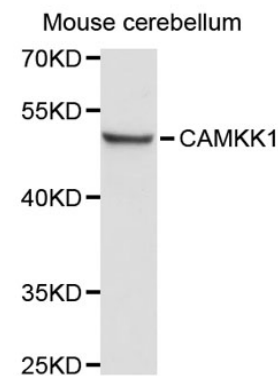
Applications

WB

Dilutions

WB 1:500 - 1:1000

Validations



Western blot - CAMKK1 Polyclonal Antibody

Western blot analysis of extracts of mouse cerebellum, using CAMKK1 antibody. Secondary antibody: HRP Goat Anti-Rabbit IgG (H+L) at 1:10000 dilution. Lysates/proteins: 25ug per lane. Blocking buffer: 3% nonfat dry milk in TBST.