

SLC19A3 Polyclonal Antibody



Catalog Number: 166035

General Information

Product name:

SLC19A3 Polyclonal Antibody

Immunogen:

Applications:

WB

Specificity:

Human

Antibody description:

Polyclonal antibody to SLC19A3

Properties

Preparation:

Antigen: A synthetic Peptide of human SLC19A3

Formulation:

PBS with 0.02% sodium azide, pH7.3.

Storage:

Store at 4°C. Avoid freeze / thaw cycles.

Clonality:

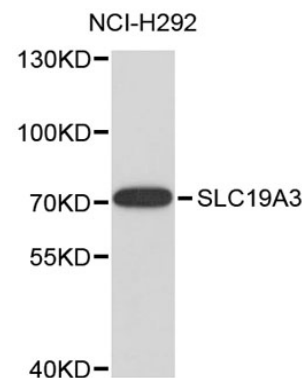
Polyclonal

Ig Type:Rabbit IgG

Applications

WB 1:500 - 1:1000

Validations



Western blot - SLC19A3 Polyclonal Antibody

Western blot analysis of extracts of NCI-H292 cells, using SLC19A3 antibody .Secondary antibody: HRP Goat Anti-Rabbit IgG (H+L) at 1:10000 dilution.Lysates/proteins: 25ug per lane.Blocking buffer: 3% nonfat dry milk in TBST.