

# VAMP1 Polyclonal Antibody



Catalog Number: 166030

## Product name

VAMP1 Polyclonal Antibody

## Specificity

Human, Mouse, Rat

## Antibody description

Polyclonal antibody to VAMP1

## Preparation

Antigen: Recombinant fusion protein containing a sequence corresponding to amino acids 1-96 of human VAMP1 (NP\_954740.1).

## Formulation

PBS with 0.02% sodium azide, 50% glycerol, pH7.3.

## Storage

Store at -20°C. Avoid freeze / thaw cycles.

## Clonality

Polyclonal

## Ig Type

Rabbit IgG

## Applications

WB, IHC, IF

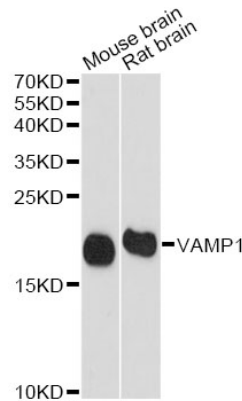
## Dilutions

WB 1:500 - 1:2000

IHC 1:50 - 1:100

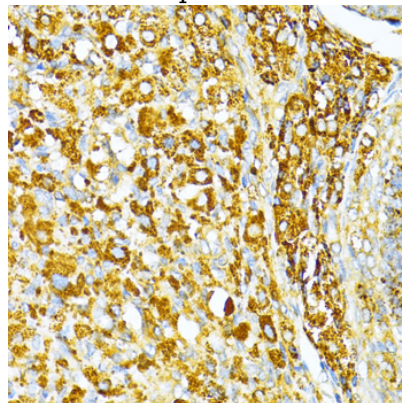
IF 1:50 - 1:100

## Validations



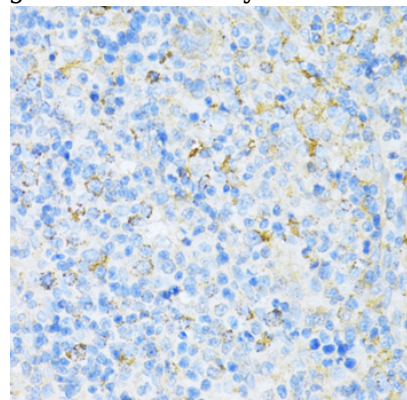
Western blot - VAMP1 Polyclonal Antibody

Western blot analysis of extracts of various cell lines, using VAMP1 antibody at 1:1000 dilution. Secondary antibody: HRP Goat Anti-Rabbit IgG (H+L) at 1:10000 dilution. Lysates/proteins: 25ug per lane. Blocking buffer: 3% nonfat dry milk in TBST. Detection: ECL Basic Kit. Exposure time: 5s.



Immunohistochemistry - VAMP1 Polyclonal Antibody

Immunohistochemistry of paraffin-embedded rat ovary using VAMP1 antibody at dilution of 1:100



(40x lens).

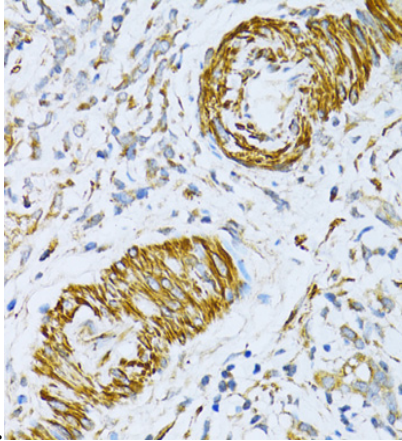
# VAMP1 Polyclonal Antibody

Catalog Number: 166030

---

## Immunohistochemistry - VAMP1 Polyclonal Antibody

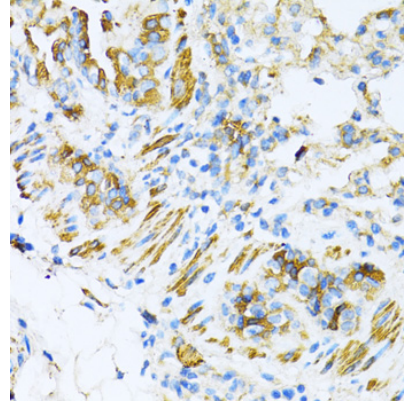
Immunohistochemistry of paraffin-embedded rat spleen using VAMP1 antibody at dilution of 1:100



(40x lens).

## Immunohistochemistry - VAMP1 Polyclonal Antibody

Immunohistochemistry of paraffin-embedded human gastric cancer using VAMP1 antibody at dilution of 1:100 (40x lens).



## Immunohistochemistry - VAMP1 Polyclonal Antibody

Immunohistochemistry of paraffin-embedded mouse lung using VAMP1 antibody at dilution of 1:100 (40x lens).