

BBS10 Polyclonal Antibody



Catalog Number: 166020

Product name

BBS10 Polyclonal Antibody

Specificity

Human, Mouse

Antibody description

Polyclonal antibody to BBS10

Preparation

Antigen: Recombinant fusion protein containing a sequence corresponding to amino acids 474-723 of human BBS10 (NP_078961.3).

Formulation

PBS with 0.02% sodium azide, 50% glycerol, pH7.3.

Storage

Store at -20°C. Avoid freeze / thaw cycles.

Clonality

Polyclonal

Ig Type

Rabbit IgG

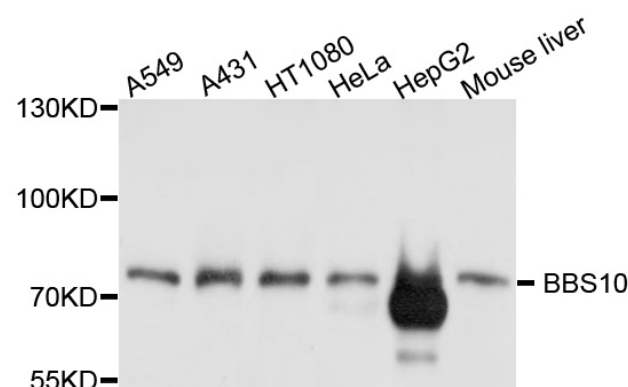
Applications

WB

Dilutions

WB 1:200 - 1:3000

Validations



Western blot - BBS10 Polyclonal Antibody

Western blot analysis of extracts of various cell lines, using BBS10 antibody at 1:1000 dilution. Secondary antibody: HRP Goat Anti-Rabbit IgG (H+L) at 1:10000 dilution. Lysates/proteins: 25ug per lane. Blocking buffer: 3% nonfat dry milk in TBST. Detection: ECL Basic Kit. Exposure time: 5s.