

# NMT1 Polyclonal Antibody

Catalog Number: 166007

## Product name

NMT1 Polyclonal Antibody

## Specificity

Human, Mouse, Rat

## Antibody description

Polyclonal antibody to NMT1

## Preparation

Antigen: Recombinant fusion protein containing a sequence corresponding to amino acids 1-250 of human NMT1 (NP\_066565.1).

## Formulation

PBS with 0.02% sodium azide, 50% glycerol, pH7.3.

## Storage

Store at -20°C. Avoid freeze / thaw cycles.

## Clonality

Polyclonal

## Ig Type

Rabbit IgG

## Applications

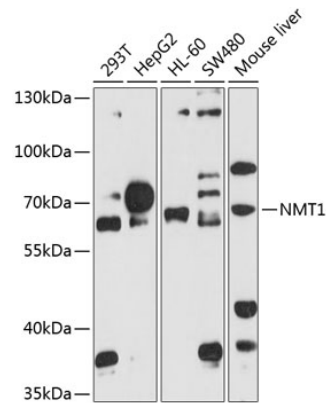
WB, IHC

## Dilutions

WB 1:200 - 1:2000

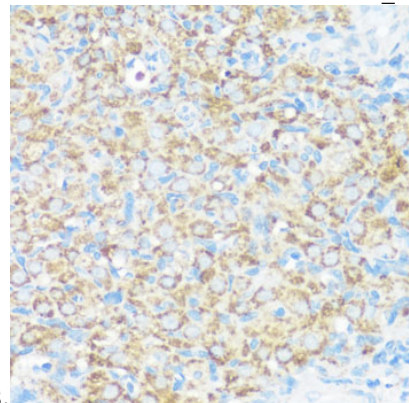
IHC 1:50 - 1:200

## Validations



## Western blot - NMT1 Polyclonal Antibody

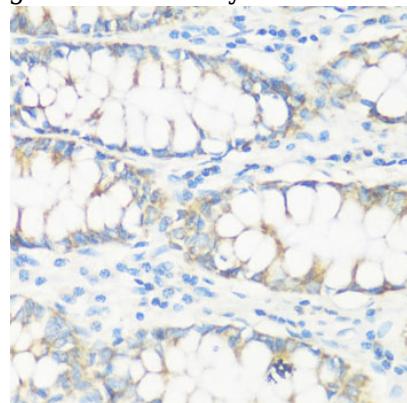
Western blot analysis of extracts of various cell lines, using NMT1 antibody at 1:1000 dilution. Secondary antibody: HRP Goat Anti-Rabbit IgG (H+L) at 1:10000 dilution. Lysates/proteins: 25ug per lane. Blocking buffer: 3% nonfat dry milk in TBST. Detection: ECL Enhanced Kit. Exposure



time: 90s.

## Immunohistochemistry - NMT1 Polyclonal Antibody

Immunohistochemistry of paraffin-embedded rat ovary using NMT1 antibody at dilution of 1:100



(40x lens).

# NMT1 Polyclonal Antibody

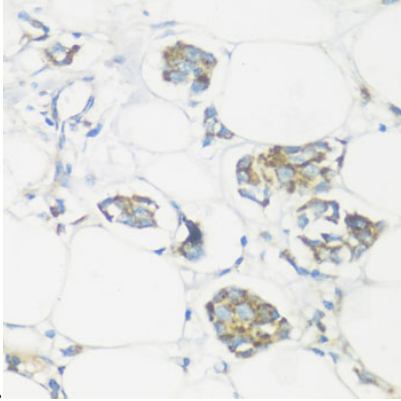


Catalog Number: 166007

---

## Immunohistochemistry - NMT1 Polyclonal Antibody

Immunohistochemistry of paraffin-embedded human colon using NMT1 antibody at dilution of



1:100 (40x lens).

## Immunohistochemistry - NMT1 Polyclonal Antibody

Immunohistochemistry of paraffin-embedded human mammary cancer using NMT1 antibody at dilution of 1:100 (40x lens).