

EIF3J Polyclonal Antibody



Catalog Number: 165991

Product name

EIF3J Polyclonal Antibody

Specificity

Human, Mouse, Rat

Antibody description

Polyclonal antibody to EIF3J

Preparation

Antigen: Recombinant fusion protein containing a sequence corresponding to amino acids 1-258 of human EIF3J (NP_003749.2).

Formulation

PBS with 0.02% sodium azide, 50% glycerol, pH7.3.

Storage

Store at -20°C. Avoid freeze / thaw cycles.

Clonality

Polyclonal

Ig Type

Rabbit IgG

Applications

WB, IHC, IF

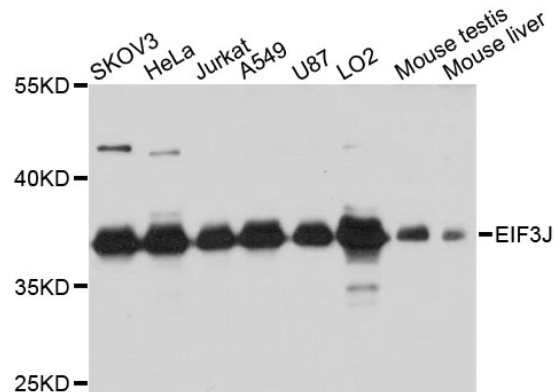
Dilutions

WB 1:200 - 1:2000

IHC 1:50 - 1:200

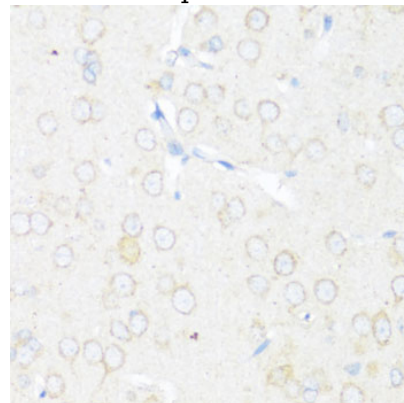
IF 1:50 - 1:200

Validations



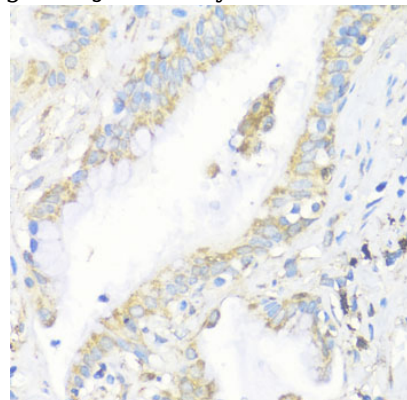
Western blot - EIF3J Polyclonal Antibody

Western blot analysis of extracts of various cell lines, using EIF3J antibody at 1:3000 dilution. Secondary antibody: HRP Goat Anti-Rabbit IgG (H+L) at 1:10000 dilution. Lysates/proteins: 25ug per lane. Blocking buffer: 3% nonfat dry milk in TBST. Detection: ECL Basic Kit. Exposure time: 10s.



Immunohistochemistry - EIF3J Polyclonal Antibody

Immunohistochemistry of paraffin-embedded rat brain using EIF3J antibody at dilution of 1:100



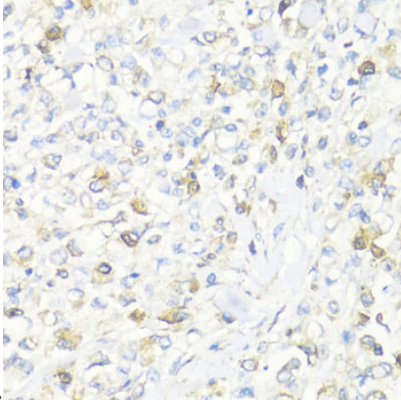
(40x lens).

EIF3J Polyclonal Antibody

Catalog Number: 165991

Immunohistochemistry - EIF3J Polyclonal Antibody

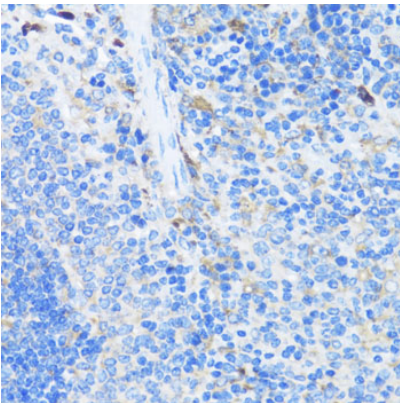
Immunohistochemistry of paraffin-embedded human lung using EIF3J antibody at dilution of



1:100 (40x lens).

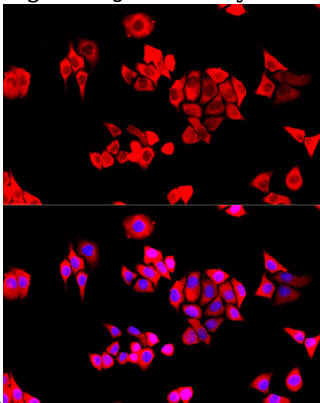
Immunohistochemistry - EIF3J Polyclonal Antibody

Immunohistochemistry of paraffin-embedded human gastric cancer using EIF3J antibody at dilution of 1:100 (40x lens).



Immunohistochemistry - EIF3J Polyclonal Antibody

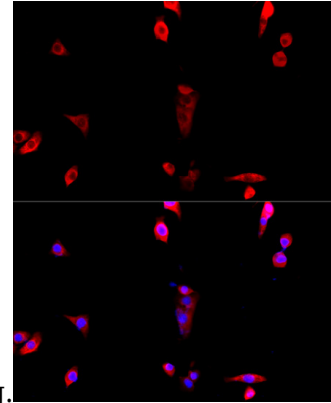
Immunohistochemistry of paraffin-embedded mouse spleen using EIF3J antibody at dilution of



1:100 (40x lens).

Immunofluorescence - EIF3J Polyclonal Antibody

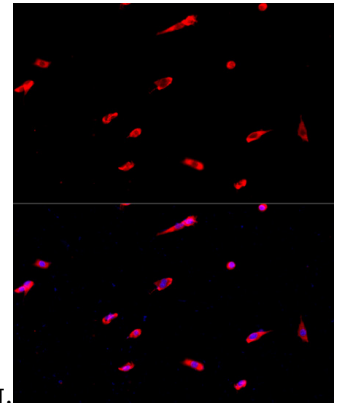
Immunofluorescence analysis of HeLa cells using EIF3J antibody at dilution of 1:100. Blue: DAPI for



nuclear staining.

Immunofluorescence - EIF3J Polyclonal Antibody

Immunofluorescence analysis of NIH/3T3 cells using EIF3J antibody at dilution of 1:100. Blue:



DAPI for nuclear staining.

Immunofluorescence - EIF3J Polyclonal Antibody

Immunofluorescence analysis of PC-12 cells using EIF3J antibody at dilution of 1:100. Blue: DAPI for nuclear staining.