

# ATG2A Polyclonal Antibody



Catalog Number: 165967

## Product name

ATG2A Polyclonal Antibody

## Specificity

Human

## Antibody description

Polyclonal antibody to ATG2A

## Preparation

Antigen: A synthetic peptide corresponding to a sequence within amino acids 700-800 of human ATG2A (NP\_055919.2).

## Formulation

PBS with 0.02% sodium azide, 50% glycerol, pH7.3.

## Storage

Store at -20°C. Avoid freeze / thaw cycles.

## Clonality

Polyclonal

## Ig Type

Rabbit IgG

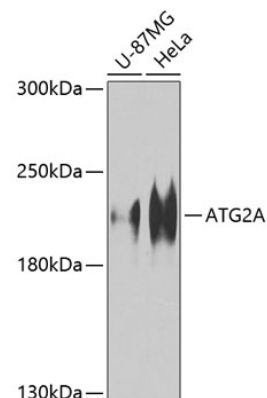
## Applications

WB

## Dilutions

WB 1:500 - 1:2000

## Validations



Western blot - ATG2A Polyclonal Antibody

Western blot analysis of extracts of various cell lines, using ATG2A Antibody at 1:1000 dilution. Secondary antibody: HRP Goat Anti-Rabbit IgG (H+L) at 1:10000 dilution. Lysates/proteins: 25ug per lane. Blocking buffer: 3% nonfat dry milk in TBST. Detection: ECL Basic Kit. Exposure time: 60s.