

# TAF15 Polyclonal Antibody



Catalog Number: 165889

## Product name

TAF15 Polyclonal Antibody

## Specificity

Human

## Antibody description

Polyclonal antibody to TAF15

## Preparation

Antigen: Recombinant fusion protein containing a sequence corresponding to amino acids 1-280 of human TAF15 (NP\_631961.1).

## Formulation

PBS with 0.02% sodium azide, 50% glycerol, pH7.3.

## Storage

Store at -20°C. Avoid freeze / thaw cycles.

## Clonality

Polyclonal

## Ig Type

Rabbit IgG

## Applications

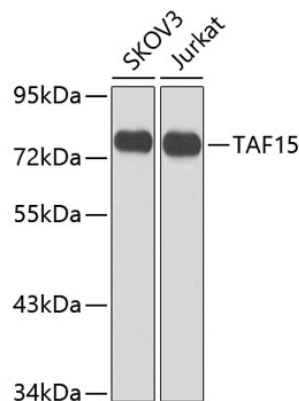
WB, IHC

## Dilutions

WB 1:500 - 1:2000

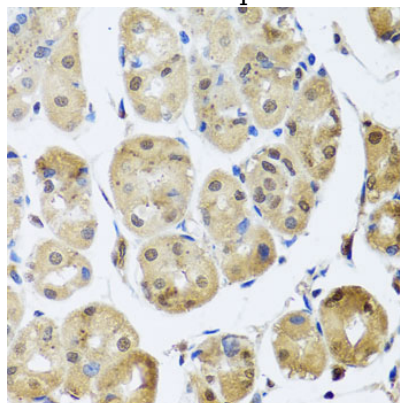
IHC 1:50 - 1:100

## Validations



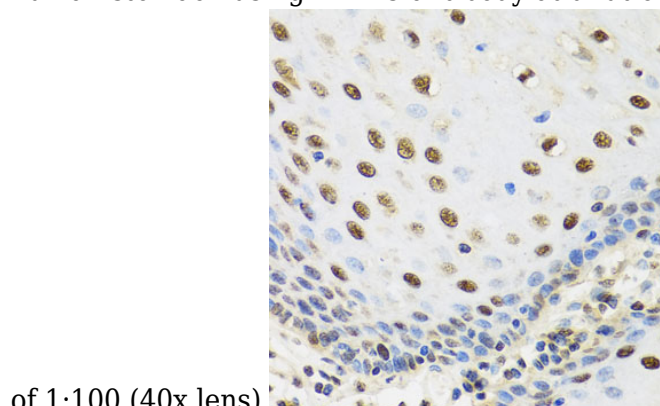
Western blot - TAF15 Polyclonal Antibody

Western blot analysis of extracts of various cell lines, using TAF15 antibody at 1:1000 dilution. Secondary antibody: HRP Goat Anti-Rabbit IgG (H+L) at 1:10000 dilution. Lysates/proteins: 25ug per lane. Blocking buffer: 3% nonfat dry milk in TBST. Detection: ECL Enhanced Kit. Exposure time: 5s.



Immunohistochemistry - TAF15 Polyclonal Antibody

Immunohistochemistry of paraffin-embedded human stomach using TAF15 antibody at dilution



of 1:100 (40x lens).

# TAF15 Polyclonal Antibody



Catalog Number: 165889

---

Immunohistochemistry - TAF15 Polyclonal Antibody

Immunohistochemistry of paraffin-embedded human esophagus using TAF15 antibody at dilution of 1:100 (40x lens).