

HLA-DMB Polyclonal Antibody



Catalog Number: 165836

Product name

HLA-DMB Polyclonal Antibody

Specificity

Human

Antibody description

Polyclonal antibody to HLA-DMB

Preparation

Antigen: Recombinant fusion protein containing a sequence corresponding to amino acids 19-218 of human HLA-DMB (NP_002109.2).

Formulation

PBS with 0.02% sodium azide, 50% glycerol, pH7.3.

Storage

Store at -20°C. Avoid freeze / thaw cycles.

Clonality

Polyclonal

Ig Type

Rabbit IgG

Applications

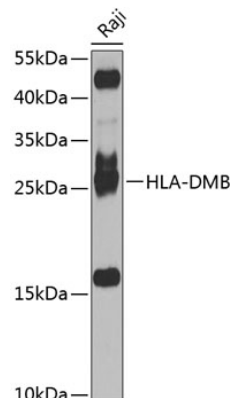
WB, IHC

Dilutions

WB 1:500 - 1:2000

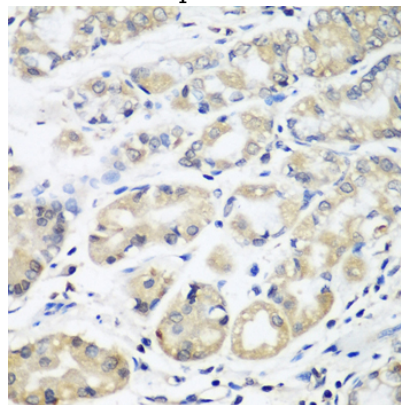
IHC 1:50 - 1:100

Validations



Western blot - HLA-DMB Polyclonal Antibody

Western blot analysis of extracts of Raji cells, using HLA-DMB antibody at 1:1000 dilution. Secondary antibody: HRP Goat Anti-Rabbit IgG (H+L) at 1:10000 dilution. Lysates/proteins: 25ug per lane. Blocking buffer: 3% nonfat dry milk in TBST. Detection: ECL Basic Kit. Exposure time: 90s.



Immunohistochemistry - HLA-DMB Polyclonal Antibody

Immunohistochemistry of paraffin-embedded human stomach using HLA-DMB antibody at dilution of 1:100 (40x lens).