

# MDC1 Polyclonal Antibody



Catalog Number: 165818

## Product name

MDC1 Polyclonal Antibody

## Specificity

Human

## Antibody description

Polyclonal antibody to MDC1

## Preparation

Antigen: Recombinant fusion protein containing a sequence corresponding to amino acids 1-350 of human MDC1 (NP\_055456.2).

## Formulation

PBS with 0.02% sodium azide, 50% glycerol, pH7.3.

## Storage

Store at -20°C. Avoid freeze / thaw cycles.

## Clonality

Polyclonal

## Ig Type

Rabbit IgG

## Applications

WB, IHC, IF

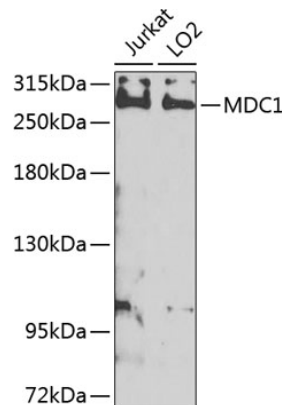
## Dilutions

WB 1:500 - 1:2000

IHC 1:100 - 1:200

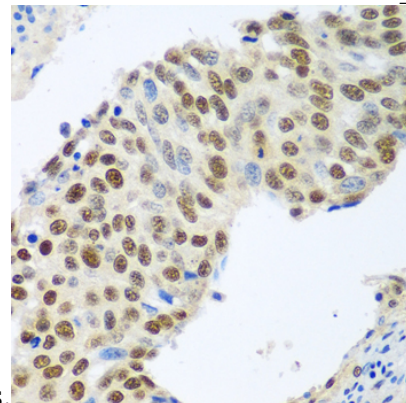
IF 1:50 - 1:200

## Validations



Western blot - MDC1 Polyclonal Antibody

Western blot analysis of extracts of various cell lines, using MDC1 antibody at 1:1000 dilution. Secondary antibody: HRP Goat Anti-Rabbit IgG (H+L) at 1:10000 dilution. Lysates/proteins: 25ug per lane. Blocking buffer: 3% nonfat dry milk in TBST. Detection: ECL Enhanced Kit. Exposure



time: 5s.

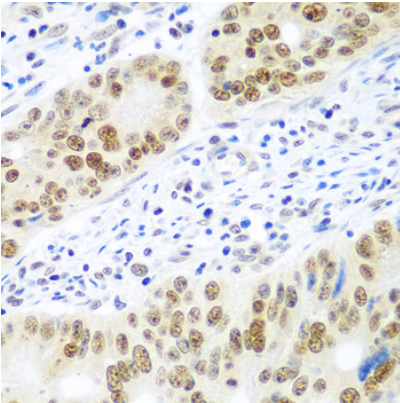
Immunohistochemistry - MDC1 Polyclonal Antibody

Immunohistochemistry of paraffin-embedded human lung cancer using MDC1 antibody at dilution of 1:100 (40x lens).

# MDC1 Polyclonal Antibody

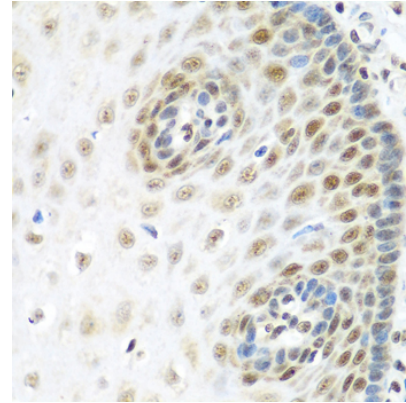


Catalog Number: 165818



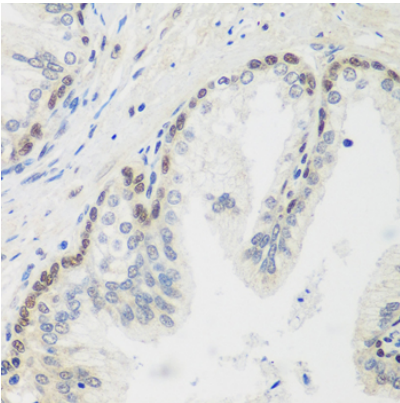
## Immunohistochemistry - MDC1 Polyclonal Antibody

Immunohistochemistry of paraffin-embedded human prostate cancer using MDC1 antibody at dilution of 1:100 (40x lens).



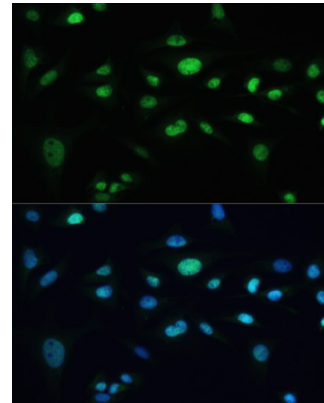
## Immunohistochemistry - MDC1 Polyclonal Antibody

Immunohistochemistry of paraffin-embedded human colon carcinoma using MDC1 antibody at dilution of 1:100 (40x lens).



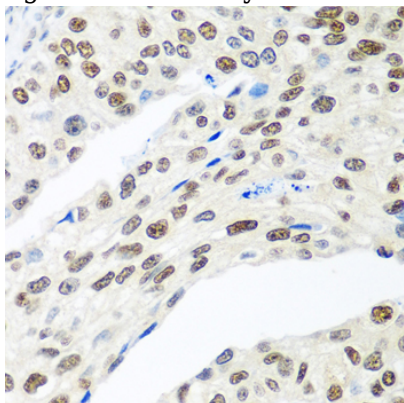
## Immunohistochemistry - MDC1 Polyclonal Antibody

Immunohistochemistry of paraffin-embedded human esophagus using MDC1 antibody at dilution of 1:100 (40x lens).



## Immunohistochemistry - MDC1 Polyclonal Antibody

Immunohistochemistry of paraffin-embedded human prostate using MDC1 antibody at dilution



of 1:100 (40x lens).

## Immunofluorescence - MDC1 Polyclonal Antibody

Immunofluorescence analysis of U-2 OS cells using MDC1 antibody at dilution of 1:100. Blue: DAPI for nuclear staining.