

AP1M2 Polyclonal Antibody



Catalog Number: 165800

Product name

AP1M2 Polyclonal Antibody

Specificity

Human, Mouse

Antibody description

Polyclonal antibody to AP1M2

Preparation

Antigen: Recombinant fusion protein containing a sequence corresponding to amino acids 164-423 of human AP1M2 (NP_005489.2).

Formulation

PBS with 0.02% sodium azide, 50% glycerol, pH7.3.

Storage

Store at -20°C. Avoid freeze / thaw cycles.

Clonality

Polyclonal

Ig Type

Rabbit IgG

Applications

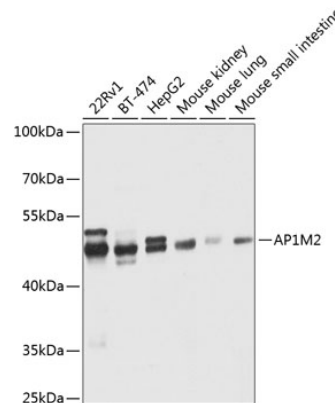
WB, IHC

Dilutions

WB 1:500 - 1:2000

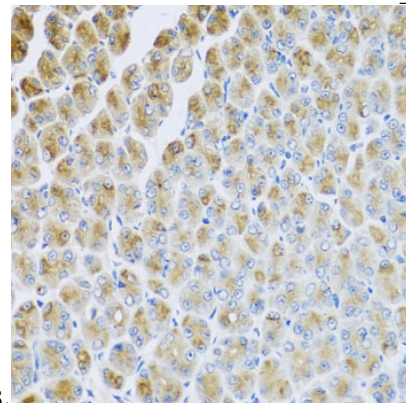
IHC 1:50 - 1:100

Validations



Western blot - AP1M2 Polyclonal Antibody

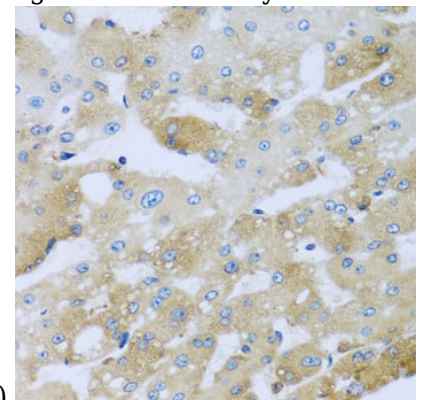
Western blot analysis of extracts of various cell lines, using AP1M2 antibody at 1:1000 dilution. Secondary antibody: HRP Goat Anti-Rabbit IgG (H+L) at 1:10000 dilution. Lysates/proteins: 25ug per lane. Blocking buffer: 3% nonfat dry milk in TBST. Detection: ECL Enhanced Kit. Exposure



time: 1s.

Immunohistochemistry - AP1M2 Polyclonal Antibody

Immunohistochemistry of paraffin-embedded mouse stomach using AP1M2 antibody at dilution



of 1:100 (40x lens).

AP1M2 Polyclonal Antibody



Catalog Number: 165800

Immunohistochemistry - AP1M2 Polyclonal Antibody

Immunohistochemistry of paraffin-embedded human liver injury using AP1M2 antibody at dilution of 1:100 (40x lens).