

# RNF166 Polyclonal Antibody



Catalog Number: 165774

## Product name

RNF166 Polyclonal Antibody

## Specificity

Human, Mouse, Rat

## Antibody description

Polyclonal antibody to RNF166

## Preparation

Antigen: A synthetic peptide corresponding to a sequence within amino acids 100 to the C-terminus of human RNF166 (NP\_849163.1).

## Formulation

PBS with 0.02% sodium azide, 50% glycerol, pH7.3.

## Storage

Store at -20°C. Avoid freeze / thaw cycles.

## Clonality

Polyclonal

## Ig Type

Rabbit IgG

## Applications

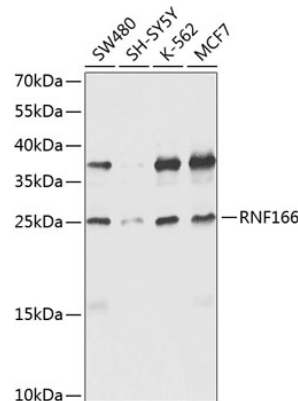
WB, IHC

## Dilutions

WB 1:500 - 1:2000

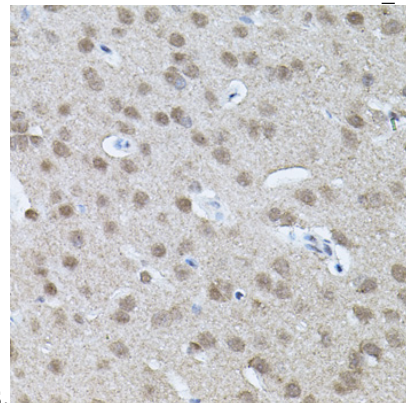
IHC 1:50 - 1:200

## Validations



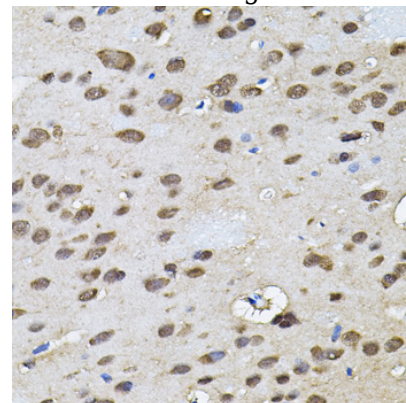
Western blot - RNF166 Polyclonal Antibody

Western blot analysis of extracts of various cell lines, using RNF166 antibody at 1:1000 dilution. Secondary antibody: HRP Goat Anti-Rabbit IgG (H+L) at 1:10000 dilution. Lysates/proteins: 25ug per lane. Blocking buffer: 3% nonfat dry milk in TBST. Detection: ECL Enhanced Kit. Exposure



Immunohistochemistry - RNF166 Polyclonal Antibody

Immunohistochemistry of paraffin-embedded mouse brain using RNF166 antibody (40x lens).



# RNF166 Polyclonal Antibody

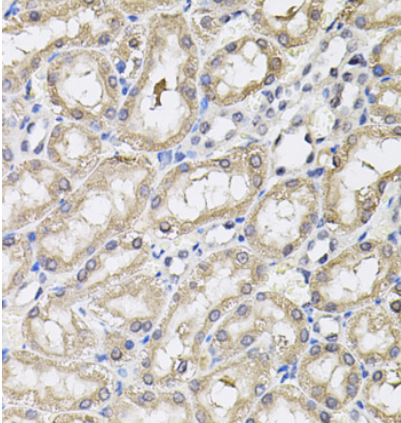


Catalog Number: 165774

---

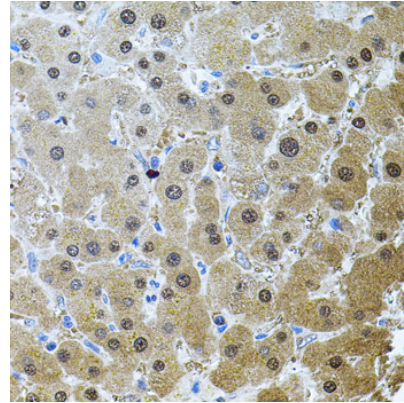
Immunohistochemistry - RNF166 Polyclonal Antibody

Immunohistochemistry of paraffin-embedded rat brain using RNF166 antibody (40x lens).



Immunohistochemistry - RNF166 Polyclonal Antibody

Immunohistochemistry of paraffin-embedded rat kidney using RNF166 antibody (40x lens).



Immunohistochemistry - RNF166 Polyclonal Antibody

Immunohistochemistry of paraffin-embedded human liver injury using RNF166 antibody (40x lens).