

# IL25 Polyclonal Antibody



Catalog Number: 165762

## Product name

IL25 Polyclonal Antibody

## Specificity

Human, Mouse, Rat

## Antibody description

Polyclonal antibody to IL25

## Preparation

Antigen: Recombinant fusion protein containing a sequence corresponding to amino acids 33-177 of human IL25 (NP\_073626.1).

## Formulation

PBS with 0.02% sodium azide, 50% glycerol, pH7.3.

## Storage

Store at -20°C. Avoid freeze / thaw cycles.

## Clonality

Polyclonal

## Ig Type

Rabbit IgG

## Applications

WB, IHC, IF

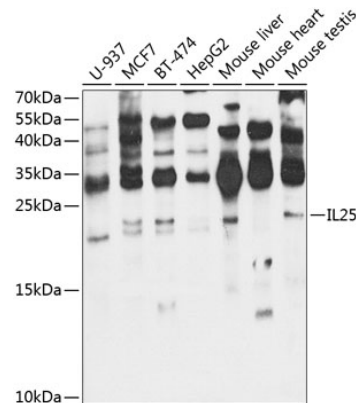
## Dilutions

WB 1:500 - 1:2000

IHC 1:50 - 1:100

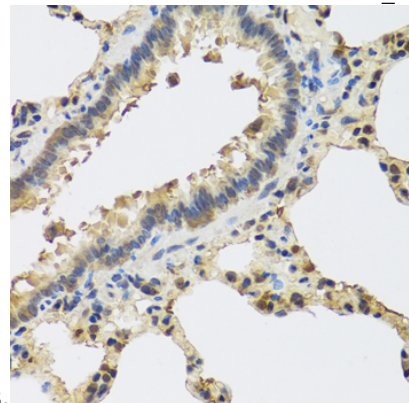
IF 1:50 - 1:200

## Validations



Western blot - IL25 Polyclonal Antibody

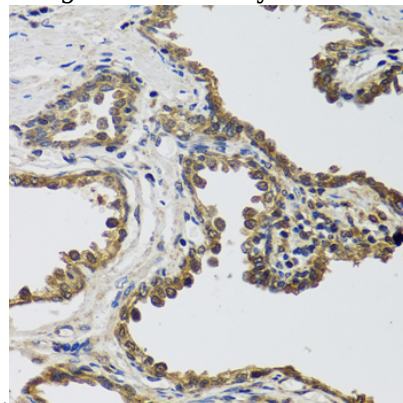
Western blot analysis of extracts of various cell lines, using IL25 antibody at 1:1000 dilution. Secondary antibody: HRP Goat Anti-Rabbit IgG (H+L) at 1:10000 dilution. Lysates/proteins: 25ug per lane. Blocking buffer: 3% nonfat dry milk in TBST. Detection: ECL Enhanced Kit. Exposure



time: 60s.

Immunohistochemistry - IL25 Polyclonal Antibody

Immunohistochemistry of paraffin-embedded rat lung using IL25 antibody at dilution of 1:100 (40x



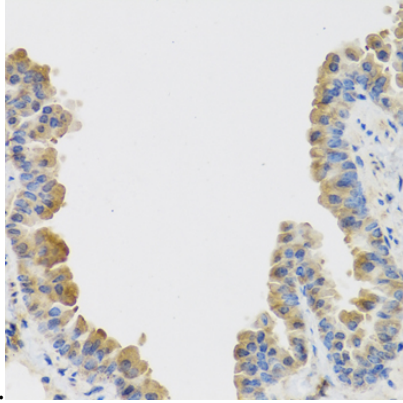
lens).

# IL25 Polyclonal Antibody

Catalog Number: 165762

Immunohistochemistry - IL25 Polyclonal Antibody

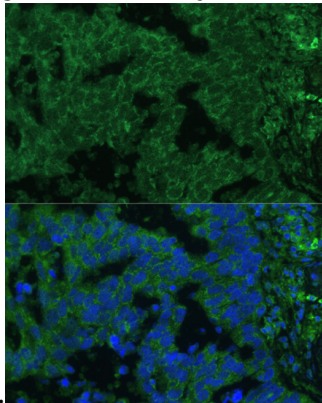
Immunohistochemistry of paraffin-embedded human prostate using IL25 antibody at dilution of



1:100 (40x lens).

Immunohistochemistry - IL25 Polyclonal Antibody

Immunohistochemistry of paraffin-embedded mouse lung using IL25 antibody at dilution of

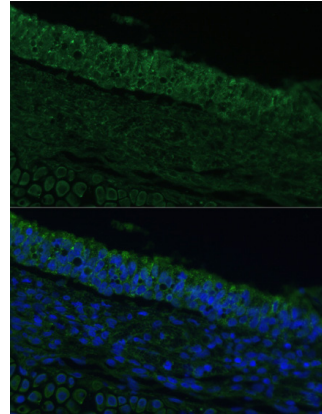


1:100 (40x lens).

Immunofluorescence - IL25 Polyclonal Antibody

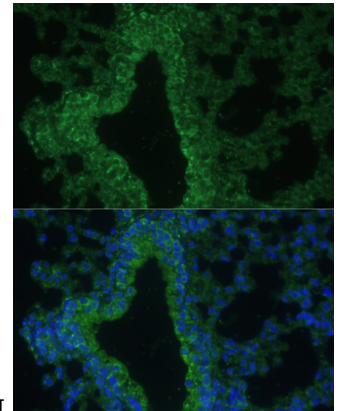
Immunofluorescence analysis of human lung

cancer cells using IL25 antibody at dilution of 1:100. Blue: DAPI for nuclear staining.



Immunofluorescence - IL25 Polyclonal Antibody

Immunofluorescence analysis of rat bronchus cells using IL25 antibody at dilution of 1:100. Blue:



DAPI for nuclear staining.

Immunofluorescence - IL25 Polyclonal Antibody

Immunofluorescence analysis of mouse lung cells using IL25 antibody at dilution of 1:100. Blue: DAPI for nuclear staining.