

METTL7A Polyclonal Antibody



Catalog Number: 165742

Product name

METTL7A Polyclonal Antibody

Specificity

Human, Rat

Antibody description

Polyclonal antibody to METTL7A

Preparation

Antigen: Recombinant fusion protein containing a sequence corresponding to amino acids 30-244 of human METTL7A (NP_054752.3).

Formulation

PBS with 0.02% sodium azide, 50% glycerol, pH7.3.

Storage

Store at -20°C. Avoid freeze / thaw cycles.

Clonality

Polyclonal

Ig Type

Rabbit IgG

Applications

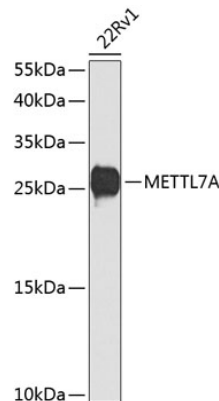
WB, IHC

Dilutions

WB 1:500 - 1:2000

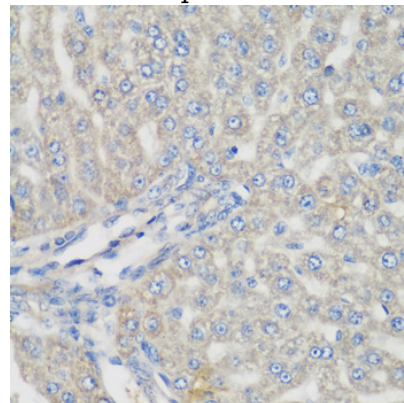
IHC 1:50 - 1:200

Validations



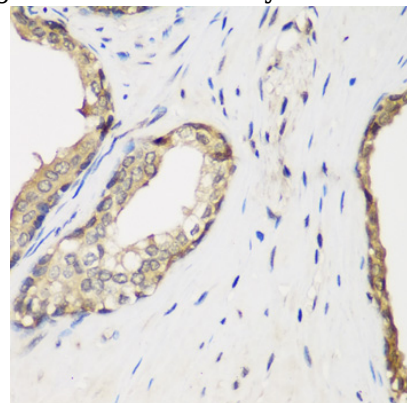
Western blot - METTL7A Polyclonal Antibody

Western blot analysis of extracts of 22Rv1 cells, using METTL7A antibody at 1:1000 dilution. Secondary antibody: HRP Goat Anti-Rabbit IgG (H+L) at 1:10000 dilution. Lysates/proteins: 25ug per lane. Blocking buffer: 3% nonfat dry milk in TBST. Detection: ECL Basic Kit. Exposure time: 90s.



Immunohistochemistry - METTL7A Polyclonal Antibody

Immunohistochemistry of paraffin-embedded rat liver using METTL7A antibody at dilution of 1:200



(40x lens).

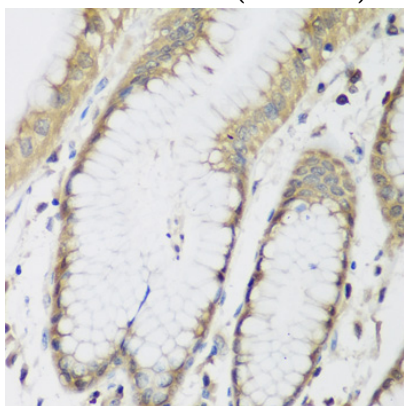
METTL7A Polyclonal Antibody



Catalog Number: 165742

Immunohistochemistry - METTL7A Polyclonal Antibody

Immunohistochemistry of paraffin-embedded human prostate using METTL7A antibody at dilution of 1:200 (40x lens).



Immunohistochemistry - METTL7A Polyclonal Antibody

Immunohistochemistry of paraffin-embedded human stomach using METTL7A antibody at dilution of 1:200 (40x lens).