

# IFI44 Polyclonal Antibody

Catalog Number: 165739

## Product name

IFI44 Polyclonal Antibody

## Specificity

Human, Mouse, Rat

## Antibody description

Polyclonal antibody to IFI44

## Preparation

Antigen: A synthetic peptide of mouse IFI44

## Formulation

PBS with 0.02% sodium azide, 50% glycerol, pH7.3.

## Storage

Store at -20°C. Avoid freeze / thaw cycles.

## Clonality

Polyclonal

## Ig Type

Rabbit IgG

## Applications

WB, IHC, IF

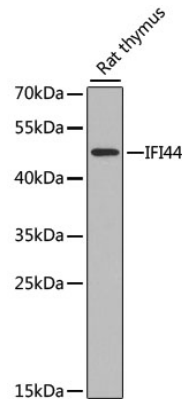
## Dilutions

WB 1:500 - 1:2000

IHC 1:100 - 1:200

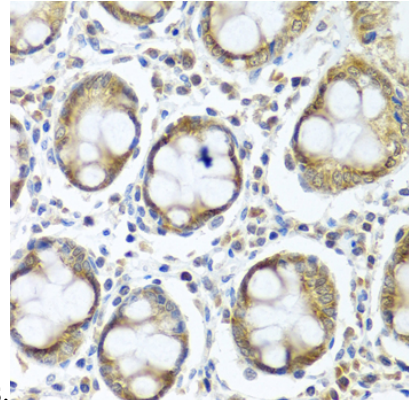
IF 1:50 - 1:200

## Validations



Western blot - IFI44 Polyclonal Antibody

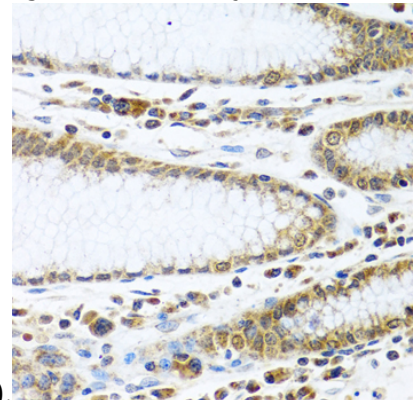
Western blot analysis of extracts of rat thymus, using IFI44 antibody at 1:1000 dilution. Secondary antibody: HRP Goat Anti-Rabbit IgG (H+L) at 1:10000 dilution. Lysates/proteins: 25ug per lane. Blocking buffer: 3% nonfat dry milk in TBST. Detection: ECL Enhanced Kit. Exposure



time: 90s.

Immunohistochemistry - IFI44 Polyclonal Antibody

Immunohistochemistry of paraffin-embedded human colon using IFI44 antibody at dilution of



1:100 (40x lens).

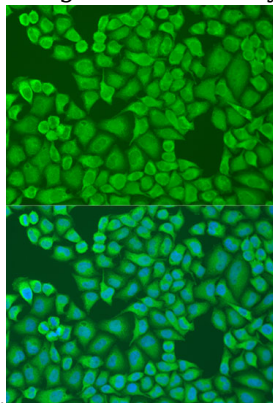
Immunohistochemistry - IFI44 Polyclonal Antibody

# IFI44 Polyclonal Antibody

Catalog Number: 165739

---

Immunohistochemistry of paraffin-embedded human stomach using IFI44 antibody at dilution of



1:100 (40x lens).

Immunofluorescence - IFI44 Polyclonal Antibody

Immunofluorescence analysis of U2OS cells using IFI44 antibody at dilution of 1:100. Blue: DAPI for nuclear staining.