

# P2RY14 Polyclonal Antibody



Catalog Number: 165734

## Product name

P2RY14 Polyclonal Antibody

## Specificity

Human, Mouse, Rat

## Antibody description

Polyclonal antibody to P2RY14

## Preparation

Antigen: Recombinant fusion protein containing a sequence corresponding to amino acids 209-338 of human P2RY14 (NP\_055694.3).

## Formulation

PBS with 0.02% sodium azide, 50% glycerol, pH7.3.

## Storage

Store at -20°C. Avoid freeze / thaw cycles.

## Clonality

Polyclonal

## Ig Type

Rabbit IgG

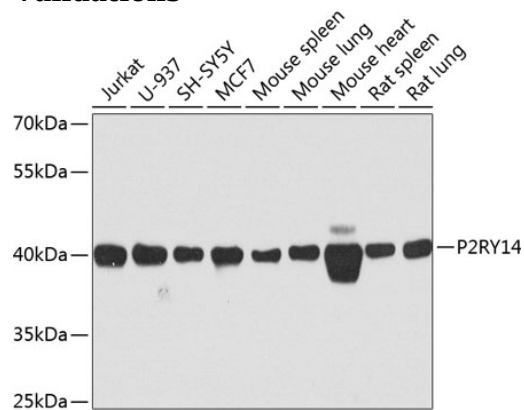
## Applications

WB

## Dilutions

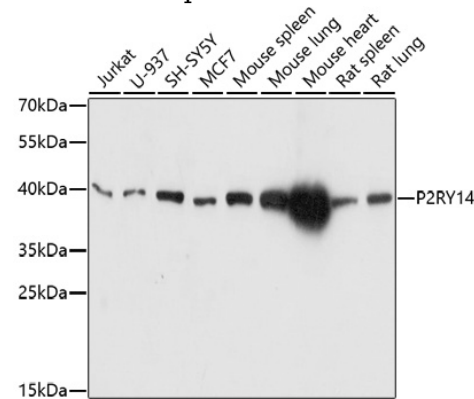
WB 1:500 - 1:2000

## Validations



Western blot - P2RY14 Polyclonal Antibody

Western blot analysis of extracts of various cell lines, using P2RY14 antibody at 1:1000 dilution. Secondary antibody: HRP Goat Anti-Rabbit IgG (H+L) at 1:10000 dilution. Lysates/proteins: 25ug per lane. Blocking buffer: 3% nonfat dry milk in TBST. Detection: ECL Basic Kit. Exposure time: 90s.



Western blot - P2RY14 Polyclonal Antibody

Western blot analysis of extracts of various cells, using P2RY14 antibody at 1:1000 dilution ratio through one-step method. Secondary antibody: HRP Goat Anti-Rabbit IgG (H+L) at 1:10000 dilution. Lysates/proteins: 25ug per lane. Blocking buffer: 3% nonfat dry milk in TBST. Detection: ECL Basic Kit. Exposure time: 10s.