

MT-ND5 Polyclonal Antibody



Catalog Number: 165716

Product name

MT-ND5 Polyclonal Antibody

Specificity

Human, Mouse, Rat

Antibody description

Polyclonal antibody to MT-ND5

Preparation

Antigen: A synthetic peptide corresponding to a sequence within amino acids 500-600 of mouse MT-ND5 (NP_904338.1).

Formulation

PBS with 0.02% sodium azide, 50% glycerol, pH7.3.

Storage

Store at -20°C. Avoid freeze / thaw cycles.

Clonality

Polyclonal

Ig Type

Rabbit IgG

Applications

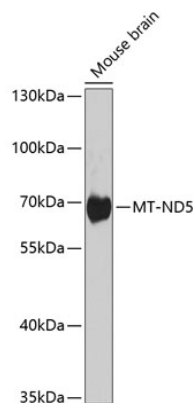
WB, IHC

Dilutions

WB 1:500 - 1:2000

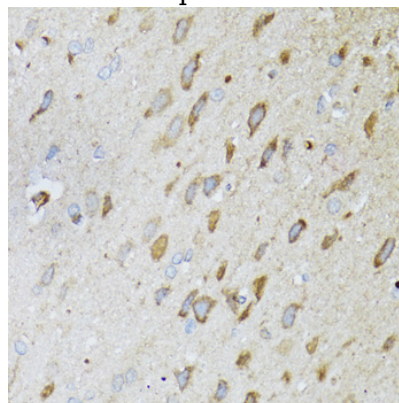
IHC 1:50 - 1:200

Validations



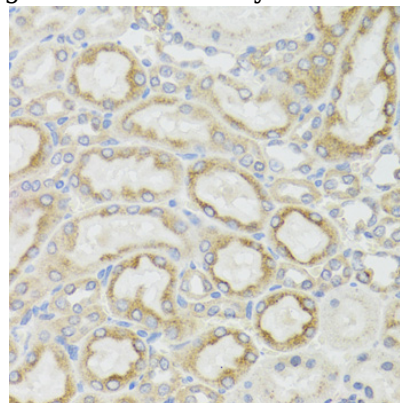
Western blot - MT-ND5 Polyclonal Antibody

Western blot analysis of extracts of various cell lines, using MT-ND5 antibody at 1:1000 dilution. Secondary antibody: HRP Goat Anti-Rabbit IgG (H+L) at 1:10000 dilution. Lysates/proteins: 25ug per lane. Blocking buffer: 3% nonfat dry milk in TBST. Detection: ECL Basic Kit. Exposure time: 5s.



Immunohistochemistry - MT-ND5 Polyclonal Antibody

Immunohistochemistry of paraffin-embedded rat brain using MT-ND5 antibody at dilution of 1:100



(40x lens).

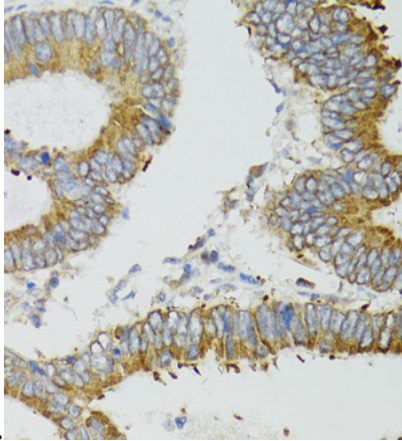
MT-ND5 Polyclonal Antibody



Catalog Number: 165716

Immunohistochemistry - MT-ND5 Polyclonal Antibody

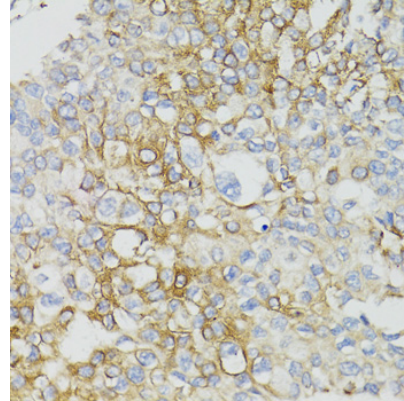
Immunohistochemistry of paraffin-embedded rat kidney using MT-ND5 antibody at dilution of 1:100



(40x lens).

Immunohistochemistry - MT-ND5 Polyclonal Antibody

Immunohistochemistry of paraffin-embedded human colon carcinoma using MT-ND5 antibody at dilution of 1:100 (40x lens).



Immunohistochemistry - MT-ND5 Polyclonal Antibody

Immunohistochemistry of paraffin-embedded human prostate cancer using MT-ND5 antibody at dilution of 1:100 (40x lens).