

# ARSF Polyclonal Antibody



Catalog Number: 165701

## Product name

ARSF Polyclonal Antibody

## Specificity

Human, Mouse, Rat

## Antibody description

Polyclonal antibody to ARSF

## Preparation

Antigen: Recombinant fusion protein containing a sequence corresponding to amino acids 1-200 of human ARSF (NP\_004033.2).

## Formulation

PBS with 0.02% sodium azide, 50% glycerol, pH7.3.

## Storage

Store at -20°C. Avoid freeze / thaw cycles.

## Clonality

Polyclonal

## Ig Type

Rabbit IgG

## Applications

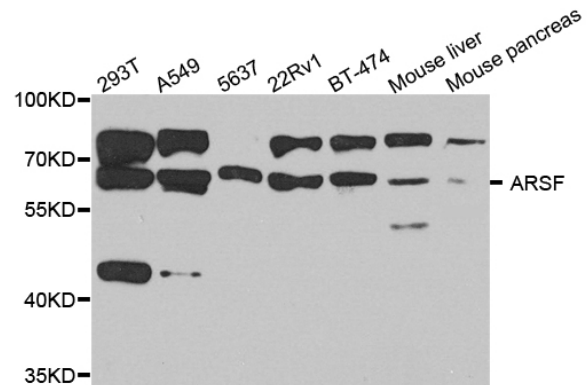
WB, IHC

## Dilutions

WB 1:500 - 1:2000

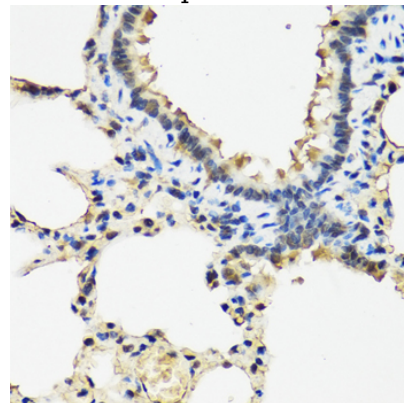
IHC 1:50 - 1:100

## Validations



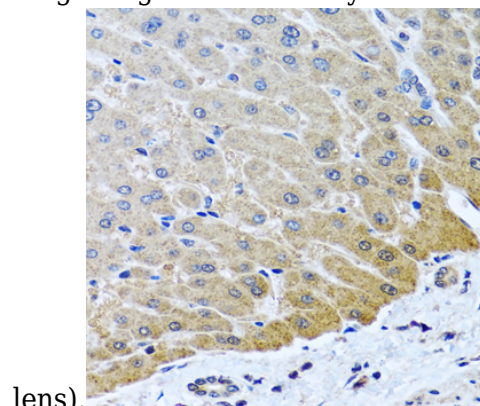
Western blot - ARSF Polyclonal Antibody

Western blot analysis of extracts of various cell lines, using ARSF antibody at 1:1000 dilution. Secondary antibody: HRP Goat Anti-Rabbit IgG (H+L) at 1:10000 dilution. Lysates/proteins: 25ug per lane. Blocking buffer: 3% nonfat dry milk in TBST. Detection: ECL Basic Kit. Exposure time: 90s.



Immunohistochemistry - ARSF Polyclonal Antibody

Immunohistochemistry of paraffin-embedded rat lung using ARSF antibody at dilution of 1:100 (40x



lens).

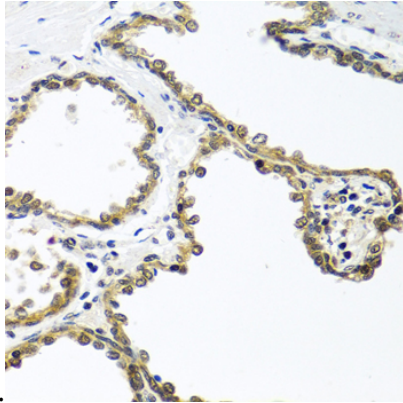
# ARSF Polyclonal Antibody



Catalog Number: 165701

Immunohistochemistry - ARSF Polyclonal Antibody

Immunohistochemistry of paraffin-embedded human liver using ARSF antibody at dilution of

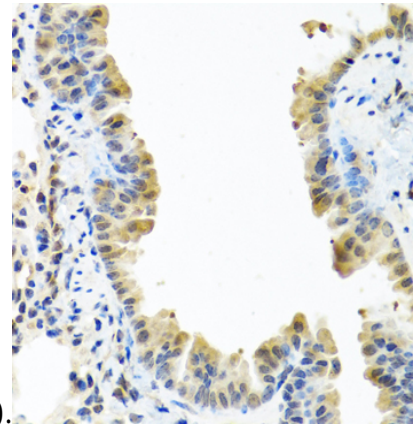


1:100 (40x lens).

Immunohistochemistry - ARSF Polyclonal Antibody

Immunohistochemistry of paraffin-embedded

human prostate using ARSF antibody at dilution of



1:100 (40x lens).

Immunohistochemistry - ARSF Polyclonal Antibody

Immunohistochemistry of paraffin-embedded mouse lung using ARSF antibody at dilution of 1:100 (40x lens).