

# HSD11B2 Polyclonal Antibody



Catalog Number: 165696

## Product name

HSD11B2 Polyclonal Antibody

## Specificity

Human, Rat

## Antibody description

Polyclonal antibody to HSD11B2

## Preparation

Antigen: Recombinant fusion protein containing a sequence corresponding to amino acids 266-405 of human HSD11B2 (NP\_000187.3).

## Formulation

PBS with 0.02% sodium azide, 50% glycerol, pH7.3.

## Storage

Store at -20°C. Avoid freeze / thaw cycles.

## Clonality

Polyclonal

## Ig Type

Rabbit IgG

## Applications

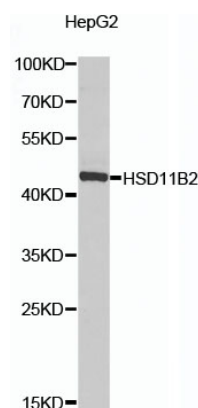
WB, IHC

## Dilutions

WB 1:200 - 1:1000

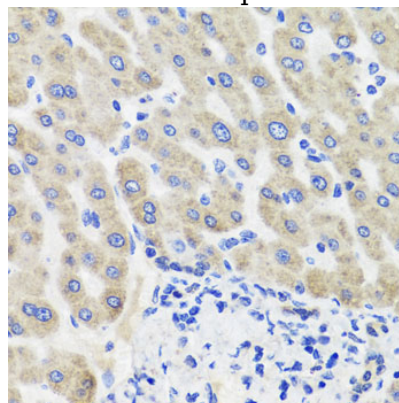
IHC 1:50 - 1:100

## Validations



Western blot - HSD11B2 Polyclonal Antibody

Western blot analysis of extracts of HepG2 cells, using HSD11B2 antibody at 1:1000 dilution. Secondary antibody: HRP Goat Anti-Rabbit IgG (H+L) at 1:10000 dilution. Lysates/proteins: 25ug per lane. Blocking buffer: 3% nonfat dry milk in TBST. Detection: ECL Enhanced Kit. Exposure time: 15s.



Immunohistochemistry - HSD11B2 Polyclonal Antibody

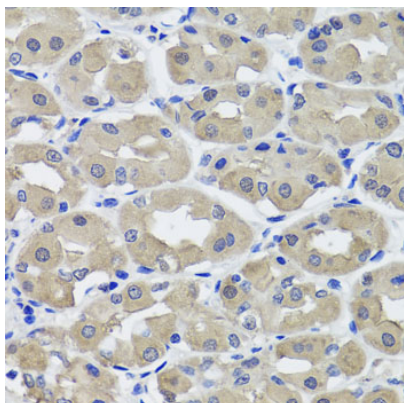
Immunohistochemistry of paraffin-embedded human liver injury using HSD11B2 antibody at dilution of 1:100 (40x lens).

# HSD11B2 Polyclonal Antibody



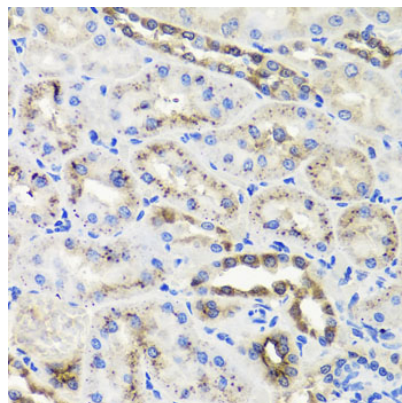
Catalog Number: 165696

---



Immunohistochemistry - HSD11B2 Polyclonal Antibody

Immunohistochemistry of paraffin-embedded human stomach using HSD11B2 antibody at dilution of 1:100 (40x lens).



Immunohistochemistry - HSD11B2 Polyclonal Antibody

Immunohistochemistry of paraffin-embedded rat kidney using HSD11B2 antibody at dilution of 1:100 (40x lens).