

# LHX4 Polyclonal Antibody



Catalog Number: 165690

## Product name

LHX4 Polyclonal Antibody

## Specificity

Human, Mouse, Rat

## Antibody description

Polyclonal antibody to LHX4

## Preparation

Antigen: Recombinant fusion protein containing a sequence corresponding to amino acids 121-390 of human LHX4 (NP\_203129.1).

## Formulation

PBS with 0.02% sodium azide, 50% glycerol, pH7.3.

## Storage

Store at -20°C. Avoid freeze / thaw cycles.

## Clonality

Polyclonal

## Ig Type

Rabbit IgG

## Applications

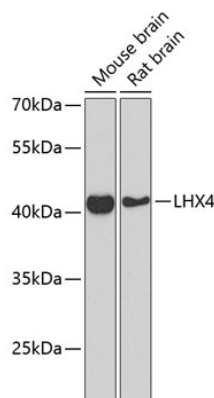
WB, IHC

## Dilutions

WB 1:500 - 1:2000

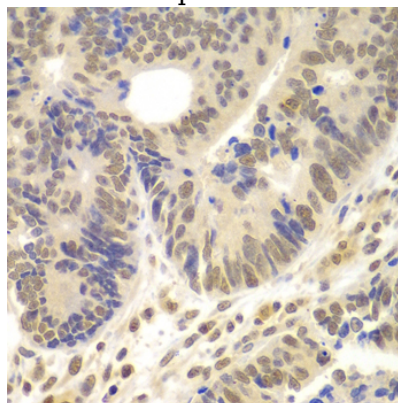
IHC 1:50 - 1:200

## Validations



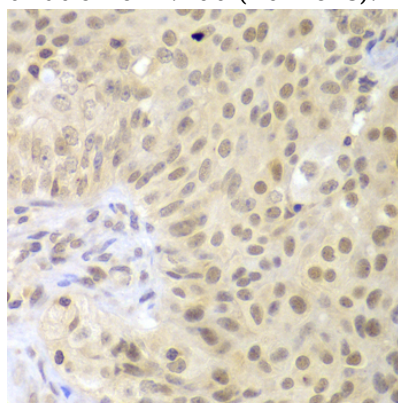
## Western blot - LHX4 Polyclonal Antibody

Western blot analysis of extracts of various cell lines, using LHX4 Antibody at 1:1000 dilution. Secondary antibody: HRP Goat Anti-Rabbit IgG (H+L) at 1:10000 dilution. Lysates/proteins: 25ug per lane. Blocking buffer: 3% nonfat dry milk in TBST. Detection: ECL Basic Kit. Exposure time: 90s.



## Immunohistochemistry - LHX4 Polyclonal Antibody

Immunohistochemistry of paraffin-embedded human colon carcinoma using LHX4 antibody at dilution of 1:100 (40x lens).



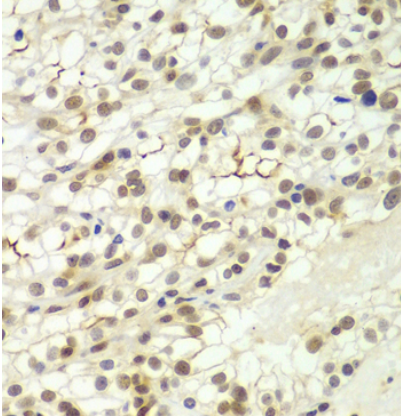
# LHX4 Polyclonal Antibody

Catalog Number: 165690

---

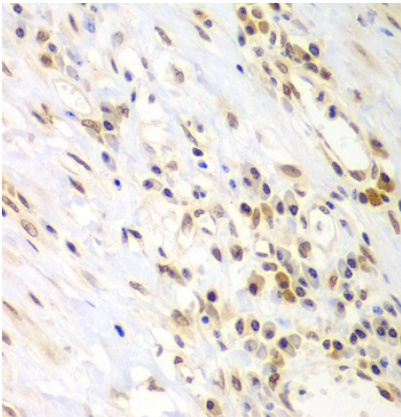
## Immunohistochemistry - LHX4 Polyclonal Antibody

Immunohistochemistry of paraffin-embedded human oophoroma using LHX4 antibody at dilution of 1:100 (40x lens).



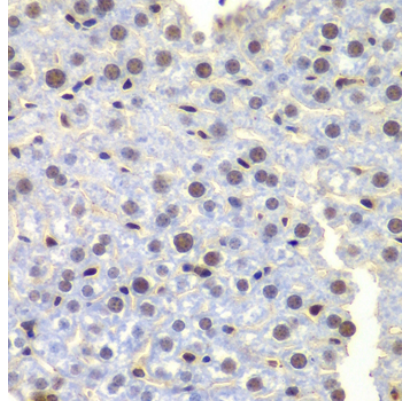
## Immunohistochemistry - LHX4 Polyclonal Antibody

Immunohistochemistry of paraffin-embedded human kidney cancer using LHX4 antibody at dilution of 1:100 (40x lens).



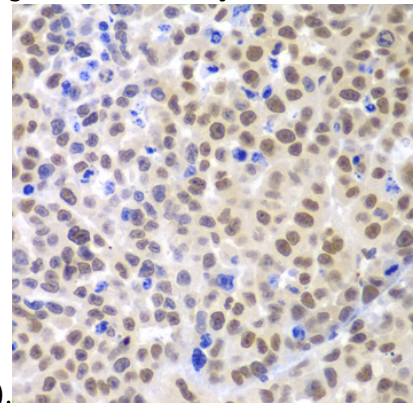
## Immunohistochemistry - LHX4 Polyclonal Antibody

Immunohistochemistry of paraffin-embedded human gastric cancer using LHX4 antibody at dilution of 1:100 (40x lens).



## Immunohistochemistry - LHX4 Polyclonal Antibody

Immunohistochemistry of paraffin-embedded mouse liver using LHX4 antibody at dilution of



1:100 (40x lens).

## Immunohistochemistry - LHX4 Polyclonal Antibody

Immunohistochemistry of paraffin-embedded mouse cancer using LHX4 antibody at dilution of 1:100 (40x lens).