

OSGEPL1 Polyclonal Antibody



Catalog Number: 165665

Product name

OSGEPL1 Polyclonal Antibody

Specificity

Human, Mouse, Rat

Antibody description

Polyclonal antibody to OSGEPL1

Preparation

Antigen: Recombinant fusion protein containing a sequence corresponding to amino acids 1-270 of human OSGEPL1 (NP_071748.2).

Formulation

PBS with 0.02% sodium azide, 50% glycerol, pH7.3.

Storage

Store at -20°C. Avoid freeze / thaw cycles.

Clonality

Polyclonal

Ig Type

Rabbit IgG

Applications

WB, IHC, IF

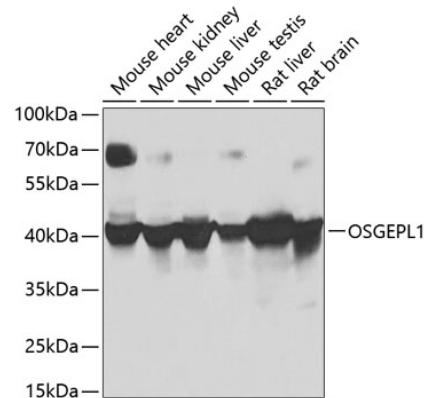
Dilutions

WB 1:500 - 1:2000

IHC 1:50 - 1:100

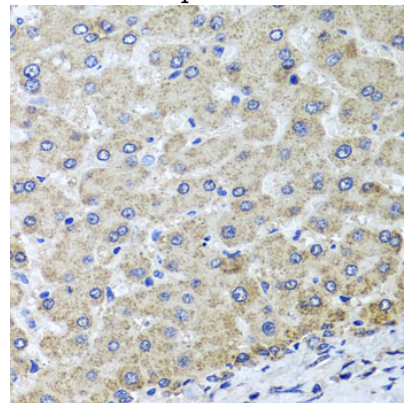
IF 1:50 - 1:100

Validations



Western blot - OSGEPL1 Polyclonal Antibody

Western blot analysis of extracts of various cell lines, using OSGEPL1 antibody at 1:1000 dilution. Secondary antibody: HRP Goat Anti-Rabbit IgG (H+L) at 1:10000 dilution. Lysates/proteins: 25ug per lane. Blocking buffer: 3% nonfat dry milk in TBST. Detection: ECL Basic Kit. Exposure time: 30s.



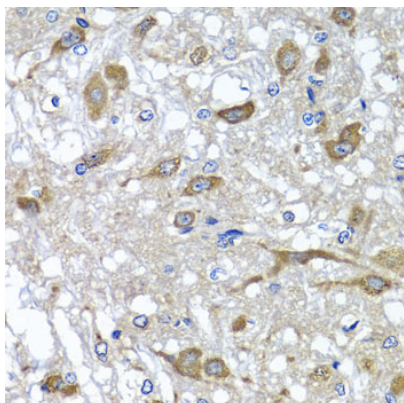
Immunohistochemistry - OSGEPL1 Polyclonal Antibody

Immunohistochemistry of paraffin-embedded human liver injury using OSGEPL1 antibody at dilution of 1:100 (40x lens).

OSGEPL1 Polyclonal Antibody



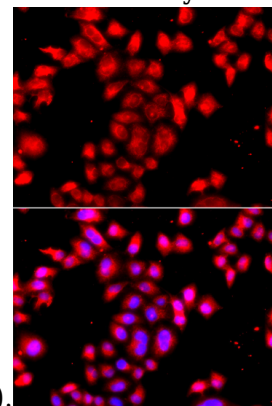
Catalog Number: 165665



Immunohistochemistry - OSGEPL1 Polyclonal Antibody

Immunohistochemistry of paraffin-embedded mouse stomach using OSGEPL1 antibody at

dilution of 1:100 (40x lens).

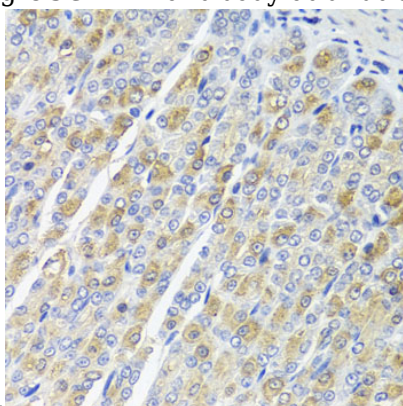


Immunofluorescence - OSGEPL1 Polyclonal Antibody

Immunofluorescence analysis of A549 cells using OSGEPL1 antibody . Blue: DAPI for nuclear staining.

Immunohistochemistry - OSGEPL1 Polyclonal Antibody

Immunohistochemistry of paraffin-embedded rat brain using OSGEPL1 antibody at dilution of 1:100



(40x lens).