

ARHGEF11 Polyclonal Antibody



Catalog Number: 165631

Product name

ARHGEF11 Polyclonal Antibody

Specificity

Human, Mouse, Rat

Antibody description

Polyclonal antibody to ARHGEF11

Preparation

Antigen: A synthetic peptide of human ARHGEF11

Formulation

PBS with 0.02% sodium azide, 50% glycerol, pH7.3.

Storage

Store at -20°C. Avoid freeze / thaw cycles.

Clonality

Polyclonal

Ig Type

Rabbit IgG

Applications

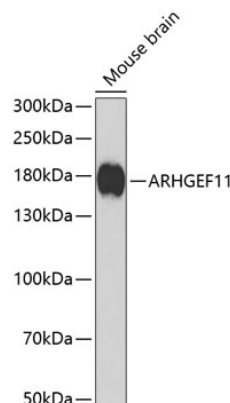
WB, IHC

Dilutions

WB 1:500 - 1:2000

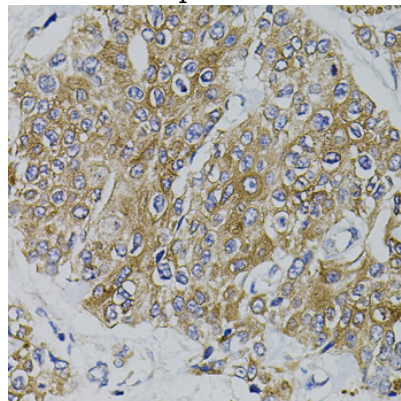
IHC 1:50 - 1:100

Validations



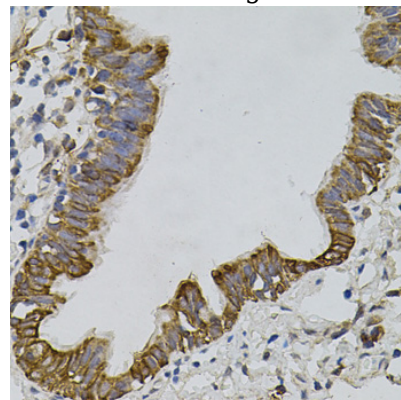
Western blot - ARHGEF11 Polyclonal Antibody

Western blot analysis of extracts of mouse brain, using ARHGEF11 antibody at 1:1000 dilution. Secondary antibody: HRP Goat Anti-Rabbit IgG (H+L) at 1:10000 dilution. Lysates/proteins: 25ug per lane. Blocking buffer: 3% nonfat dry milk in TBST. Detection: ECL Basic Kit. Exposure time: 90s.



Immunohistochemistry - ARHGEF11 Polyclonal Antibody

Immunohistochemistry of paraffin-embedded human prostate cancer using ARHGEF11 antibody



(40x lens).

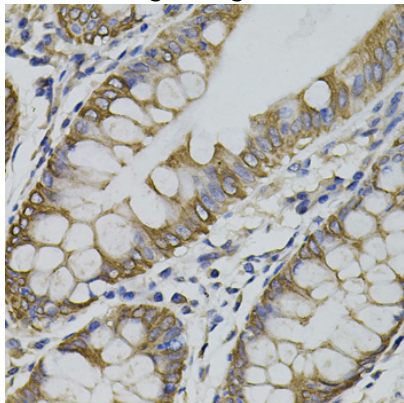
ARHGEF11 Polyclonal Antibody



Catalog Number: 165631

Immunohistochemistry - ARHGEF11 Polyclonal Antibody

Immunohistochemistry of paraffin-embedded human lung using ARHGEF11 antibody (40x lens).



Immunohistochemistry - ARHGEF11 Polyclonal Antibody

Immunohistochemistry of paraffin-embedded human colon using ARHGEF11 antibody (40x lens).