

PLCD4 Polyclonal Antibody



Catalog Number: 165562

Product name

PLCD4 Polyclonal Antibody

Specificity

Human, Mouse, Rat

Antibody description

Polyclonal antibody to PLCD4

Preparation

Antigen: Recombinant fusion protein containing a sequence corresponding to amino acids 1-290 of human PLCD4 (NP_116115.1).

Formulation

PBS with 0.02% sodium azide, 50% glycerol, pH7.3.

Storage

Store at -20°C. Avoid freeze / thaw cycles.

Clonality

Polyclonal

Ig Type

Rabbit IgG

Applications

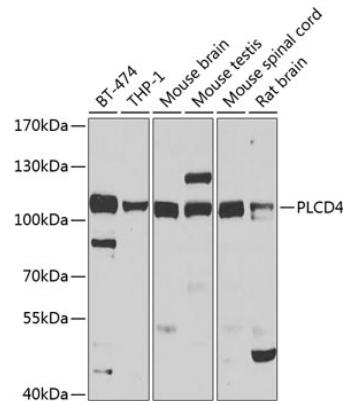
WB, IF

Dilutions

WB 1:500 - 1:2000

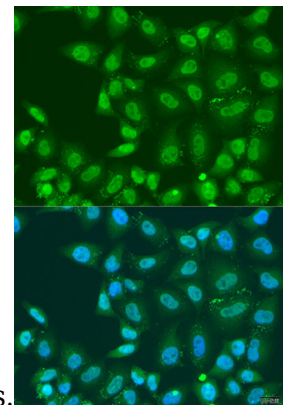
IF 1:50 - 1:200

Validations



Western blot - PLCD4 Polyclonal Antibody

Western blot analysis of extracts of various cell lines, using PLCD4 antibody at 1:1000 dilution. Secondary antibody: HRP Goat Anti-Rabbit IgG (H+L) at 1:10000 dilution. Lysates/proteins: 25ug per lane. Blocking buffer: 3% nonfat dry milk in TBST. Detection: ECL



Basic Kit .Exposure time: 30s.

Immunofluorescence - PLCD4 Polyclonal Antibody

Immunofluorescence analysis of U2OS cells using PLCD4 antibody at dilution of 1:100. Blue: DAPI for nuclear staining.