

# PDE4DIP Polyclonal Antibody



Catalog Number: 165524

## Product name

PDE4DIP Polyclonal Antibody

## Specificity

Human, Mouse, Rat

## Antibody description

Polyclonal antibody to PDE4DIP

## Preparation

Antigen: Recombinant fusion protein containing a sequence corresponding to amino acids 1-310 of human PDE4DIP (NP\_071754.3).

## Formulation

PBS with 0.02% sodium azide, 50% glycerol, pH7.3.

## Storage

Store at -20°C. Avoid freeze / thaw cycles.

## Clonality

Polyclonal

## Ig Type

Rabbit IgG

## Applications

WB, IHC

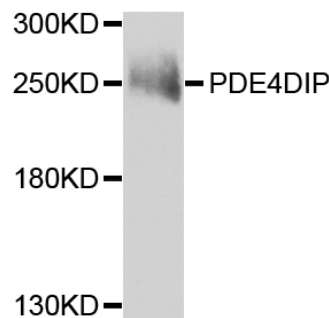
## Dilutions

WB 1:500 - 1:2000

IHC 1:50 - 1:200

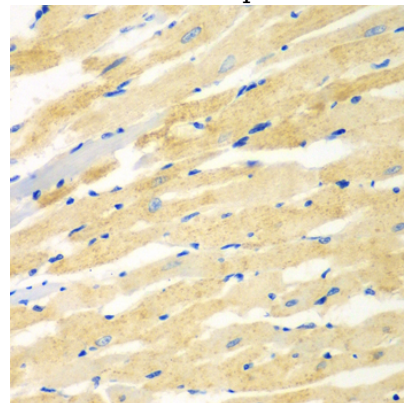
## Validations

Mouse skeletal muscle



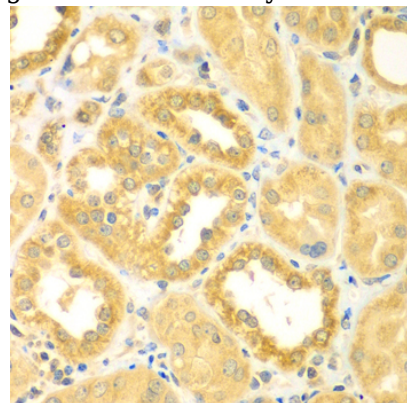
Western blot - PDE4DIP Polyclonal Antibody

Western blot analysis of extracts of mouse skeletal muscle, using PDE4DIP antibody at 1:1000 dilution. Secondary antibody: HRP Goat Anti-Rabbit IgG (H+L) at 1:10000 dilution. Lysates/proteins: 25ug per lane. Blocking buffer: 3% nonfat dry milk in TBST. Detection: ECL Enhanced Kit. Exposure time: 60s.



Immunohistochemistry - PDE4DIP Polyclonal Antibody

Immunohistochemistry of paraffin-embedded rat heart using PDE4DIP antibody at dilution of 1:100



(40x lens).

# PDE4DIP Polyclonal Antibody

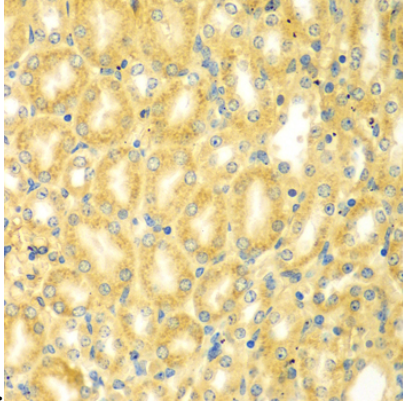


Catalog Number: 165524

---

Immunohistochemistry - PDE4DIP Polyclonal Antibody

Immunohistochemistry of paraffin-embedded human kidney using PDE4DIP antibody at dilution



of 1:100 (40x lens).

Immunohistochemistry - PDE4DIP Polyclonal Antibody

Immunohistochemistry of paraffin-embedded mouse kidney using PDE4DIP antibody at dilution of 1:100 (40x lens).