

# TOP1 Polyclonal Antibody



Catalog Number: 165511

## Product name

TOP1 Polyclonal Antibody

## Specificity

Human, Mouse

## Antibody description

Polyclonal antibody to TOP1

## Preparation

Antigen: A synthetic peptide corresponding to a sequence within amino acids 1-100 of human TOP1 (NP\_003277.1).

## Formulation

PBS with 0.02% sodium azide, 50% glycerol, pH7.3.

## Storage

Store at -20°C. Avoid freeze / thaw cycles.

## Clonality

Polyclonal

## Ig Type

Rabbit IgG

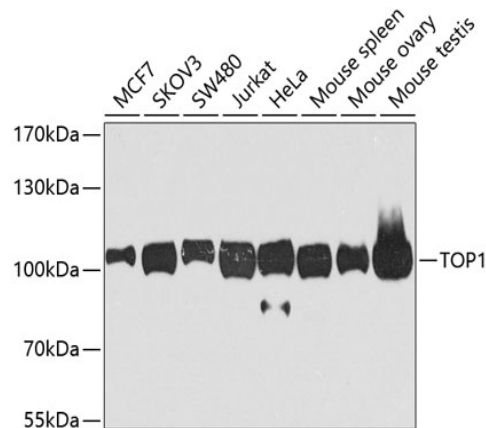
## Applications

WB, IHC, IP

## Dilutions

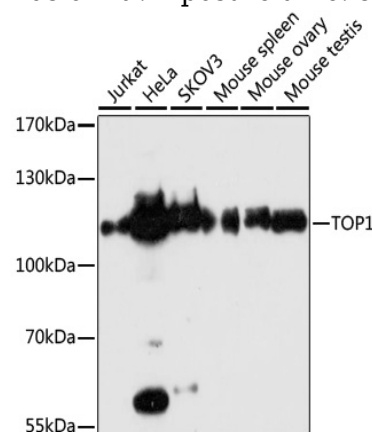
WB 1:500 - 1:2000  
IHC 1:50 - 1:200  
IP 1:50 - 1:100

## Validations



Western blot - TOP1 Polyclonal Antibody

Western blot analysis of extracts of various cell lines, using TOP1 antibody at 1:1000 dilution. Secondary antibody: HRP Goat Anti-Rabbit IgG (H+L) at 1:10000 dilution. Lysates/proteins: 25ug per lane. Blocking buffer: 3% nonfat dry milk in TBST. Detection: ECL Basic Kit. Exposure time: 90s.

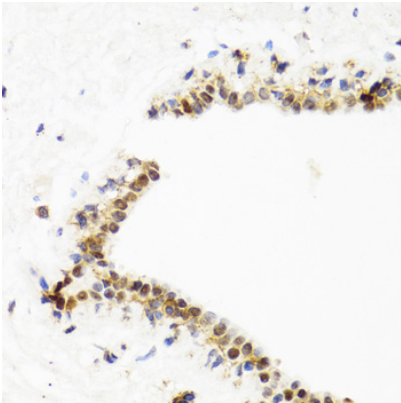


Western blot - TOP1 Polyclonal Antibody

Western blot analysis of extracts of various cells, using TOP1 antibody at 1:1000 dilution ratio through one-step method. Secondary antibody: HRP Goat Anti-Rabbit IgG (H+L) at 1:4000 dilution. Lysates/proteins: 25ug per lane. Blocking buffer: 3% nonfat dry milk in TBST. Detection: ECL Basic Kit. Exposure time: 3min.

# TOP1 Polyclonal Antibody

Catalog Number: 165511

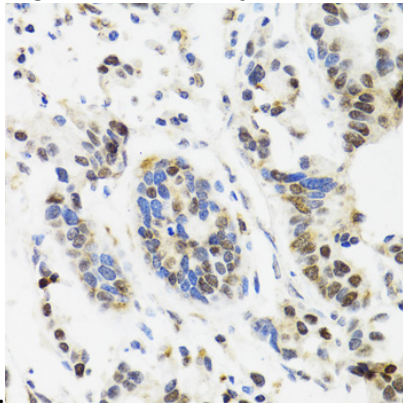


## Immunohistochemistry - TOP1 Polyclonal Antibody

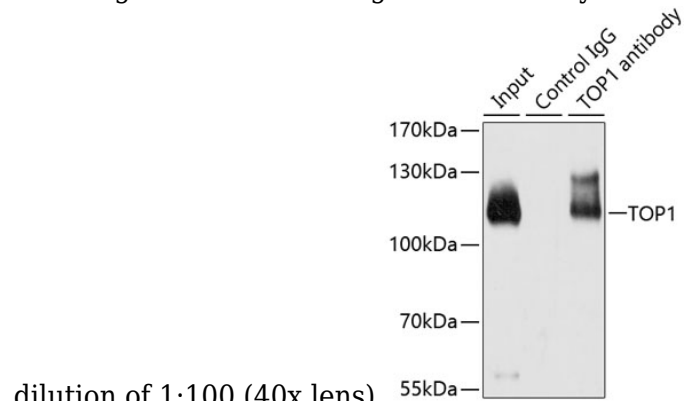
Immunohistochemistry of paraffin-embedded human gastric cancer using TOP1 antibody at

## Immunohistochemistry - TOP1 Polyclonal Antibody

Immunohistochemistry of paraffin-embedded human breast using TOP1 antibody at dilution of



1:100 (40x lens).



dilution of 1:100 (40x lens).

## Immunoprecipitation - TOP1 Polyclonal Antibody

Immunoprecipitation analysis of 200ug extracts of HeLa cells using 3ug TOP1 antibody . Western blot was performed from the immunoprecipitate using TOP1 antibody at a dilution of 1:500.