

# IRF1 Polyclonal Antibody

Catalog Number: 165492

## Product name

IRF1 Polyclonal Antibody

## Specificity

Human, Mouse

## Antibody description

Polyclonal antibody to IRF1

## Preparation

Antigen: A synthetic peptide of human IRF1

## Formulation

PBS with 0.02% sodium azide, 50% glycerol, pH7.3.

## Storage

Store at -20°C. Avoid freeze / thaw cycles.

## Clonality

Polyclonal

## Ig Type

Rabbit IgG

## Applications

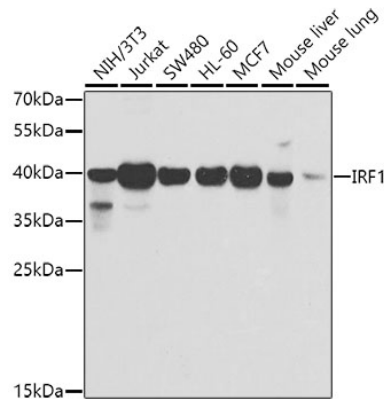
WB, IHC

## Dilutions

WB 1:500 - 1:2000

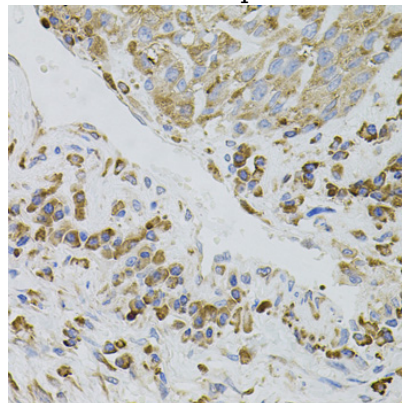
IHC 1:50 - 1:100

## Validations



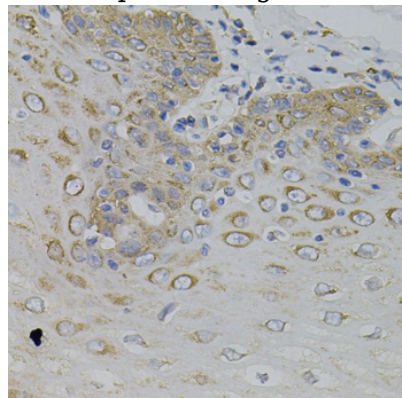
Western blot - IRF1 Polyclonal Antibody

Western blot analysis of extracts of various cell lines, using IRF1 antibody at 1:500 dilution. Secondary antibody: HRP Goat Anti-Rabbit IgG (H+L) at 1:10000 dilution. Lysates/proteins: 25ug per lane. Blocking buffer: 3% nonfat dry milk in TBST. Detection: ECL Enhanced Kit. Exposure time: 90s.



Immunohistochemistry - IRF1 Polyclonal Antibody

Immunohistochemistry of paraffin-embedded mouse spleen using IRF1 antibody (40x lens).



# IRF1 Polyclonal Antibody

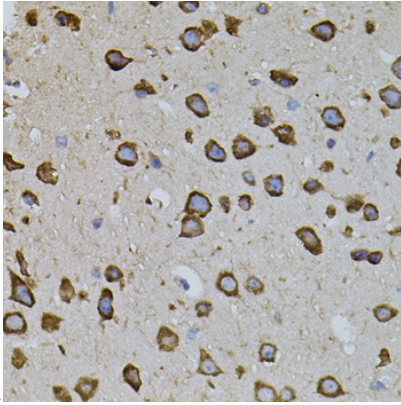


Catalog Number: 165492

---

Immunohistochemistry - IRF1 Polyclonal Antibody

Immunohistochemistry of paraffin-embedded human lung cancer using IRF1 antibody (40x



lens).

Immunohistochemistry - IRF1 Polyclonal Antibody

Immunohistochemistry of paraffin-embedded human esophagus using IRF1 antibody (40x lens).