

TET3 Polyclonal Antibody

Catalog Number: 165455

Product name

TET3 Polyclonal Antibody

Specificity

Human, Mouse, Rat

Antibody description

Polyclonal antibody to TET3

Preparation

Antigen: Recombinant fusion protein containing a sequence corresponding to amino acids 1525-1660 of human TET3 (NP_001274420.1).

Formulation

PBS with 0.02% sodium azide, 50% glycerol, pH7.3.

Storage

Store at -20°C. Avoid freeze / thaw cycles.

Clonality

Polyclonal

Ig Type

Rabbit IgG

Applications

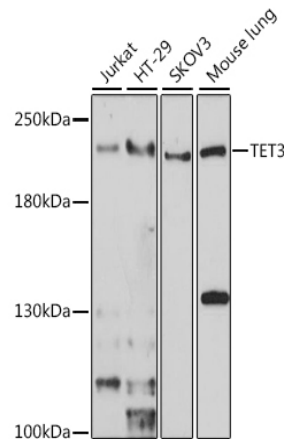
WB, IF

Dilutions

WB 1:500 - 1:2000

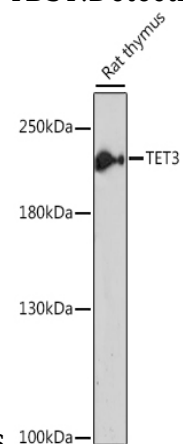
IF 1:50 - 1:200

Validations



Western blot - TET3 Polyclonal Antibody

Western blot analysis of extracts of various cell lines, using TET3 antibody at 1:1000 dilution. Secondary antibody: HRP Goat Anti-Rabbit IgG (H+L) at 1:10000 dilution. Lysates/proteins: 25ug per lane. Blocking buffer: 3% nonfat dry milk in TBST. Detection: ECL



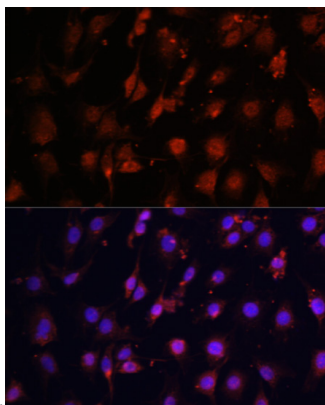
Basic Kit .Exposure time: 30s.

Western blot - TET3 Polyclonal Antibody

Western blot analysis of extracts of rat thymus, using TET3 antibody at 1:1000 dilution. Secondary antibody: HRP Goat Anti-Rabbit IgG (H+L) at 1:10000 dilution. Lysates/proteins: 25ug per lane. Blocking buffer: 3% nonfat dry milk in TBST. Detection: ECL Basic Kit .Exposure time:

TET3 Polyclonal Antibody

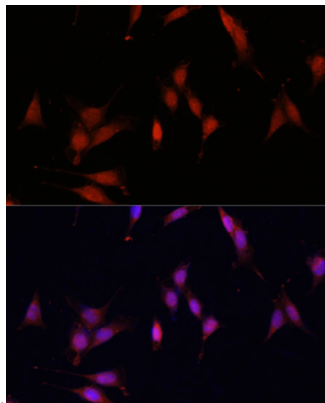
Catalog Number: 165455



5min.

Immunofluorescence - TET3 Polyclonal Antibody

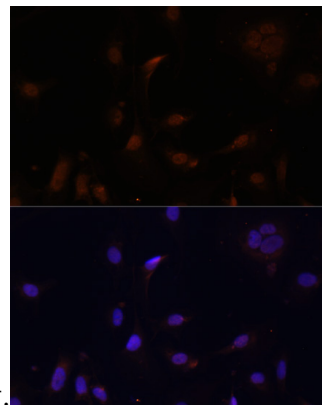
Immunofluorescence analysis of C6 cells using TET3 antibody at dilution of 1:100. Blue: DAPI for



nuclear staining.

Immunofluorescence - TET3 Polyclonal Antibody

Immunofluorescence analysis of NIH/3T3 using TET3 antibody at dilution of 1:100. Blue: DAPI for



nuclear staining.

Immunofluorescence - TET3 Polyclonal Antibody

Immunofluorescence analysis of U2OS cells using TET3 antibody at dilution of 1:100. Blue: DAPI for nuclear staining.