

# INHBC Polyclonal Antibody



Catalog Number: 165423

## Product name

INHBC Polyclonal Antibody

## Specificity

Human, Mouse, Rat

## Antibody description

Polyclonal antibody to INHBC

## Preparation

Antigen: Recombinant fusion protein containing a sequence corresponding to amino acids 103-352 of human INHBC (NP\_005529.1).

## Formulation

PBS with 0.02% sodium azide, 50% glycerol, pH7.3.

## Storage

Store at -20°C. Avoid freeze / thaw cycles.

## Clonality

Polyclonal

## Ig Type

Rabbit IgG

## Applications

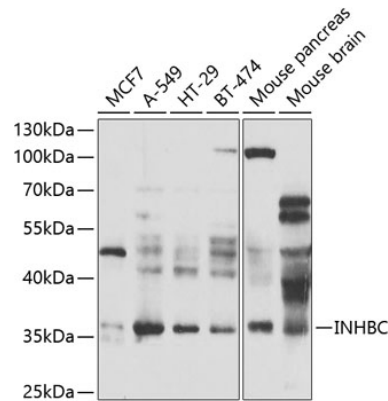
WB, IHC

## Dilutions

WB 1:500 - 1:2000

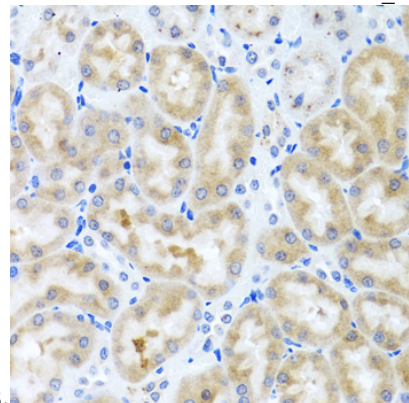
IHC 1:100 - 1:200

## Validations



Western blot - INHBC Polyclonal Antibody

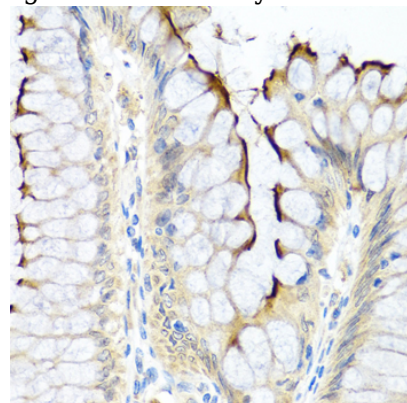
Western blot analysis of extracts of various cell lines, using INHBC antibody at 1:1000 dilution. Secondary antibody: HRP Goat Anti-Rabbit IgG (H+L) at 1:10000 dilution. Lysates/proteins: 25ug per lane. Blocking buffer: 3% nonfat dry milk in TBST. Detection: ECL Enhanced Kit. Exposure



time: 90s.

Immunohistochemistry - INHBC Polyclonal Antibody

Immunohistochemistry of paraffin-embedded rat kidney using INHBC antibody at dilution of 1:100



(40x lens).

# INHBC Polyclonal Antibody

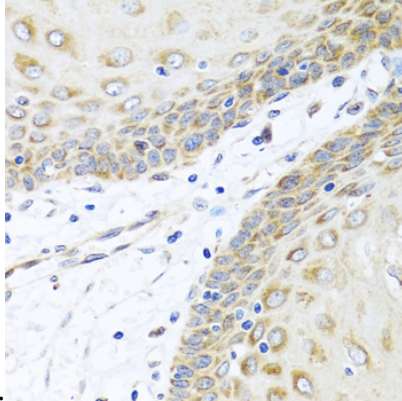


Catalog Number: 165423

---

## Immunohistochemistry - INHBC Polyclonal Antibody

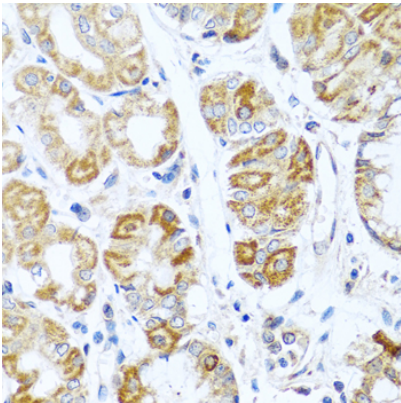
Immunohistochemistry of paraffin-embedded human colon using INHBC antibody at dilution of



1:100 (40x lens).

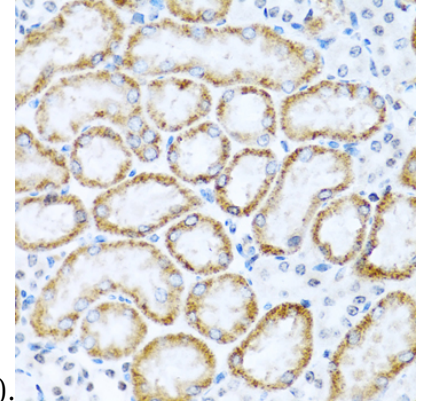
## Immunohistochemistry - INHBC Polyclonal Antibody

Immunohistochemistry of paraffin-embedded human esophagus using INHBC antibody at dilution of 1:100 (40x lens).



## Immunohistochemistry - INHBC Polyclonal Antibody

Immunohistochemistry of paraffin-embedded human stomach using INHBC antibody at dilution



of 1:100 (40x lens).

## Immunohistochemistry - INHBC Polyclonal Antibody

Immunohistochemistry of paraffin-embedded mouse kidney using INHBC antibody at dilution of 1:100 (40x lens).