

# ZBTB25 Polyclonal Antibody



Catalog Number: 165405

## Product name

ZBTB25 Polyclonal Antibody

## Specificity

Human, Mouse

## Antibody description

Polyclonal antibody to ZBTB25

## Preparation

Antigen: Recombinant fusion protein containing a sequence corresponding to amino acids 266-435 of human ZBTB25 (NP\_008908.2).

## Formulation

PBS with 0.02% sodium azide, 50% glycerol, pH7.3.

## Storage

Store at -20°C. Avoid freeze / thaw cycles.

## Clonality

Polyclonal

## Ig Type

Rabbit IgG

## Applications

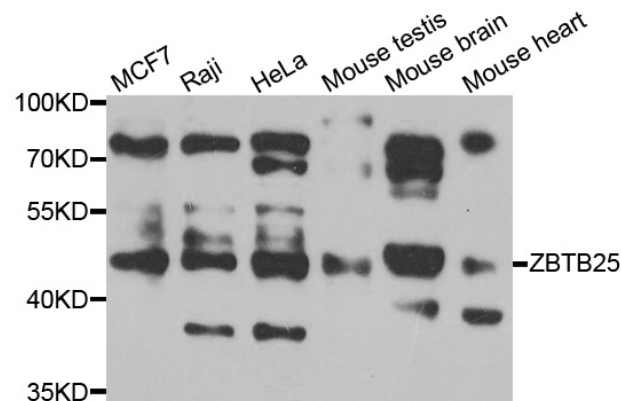
WB, IF

## Dilutions

WB 1:500 - 1:2000

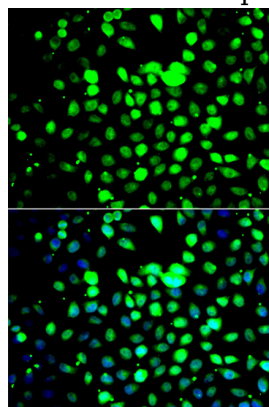
IF 1:50 - 1:200

## Validations



Western blot - ZBTB25 Polyclonal Antibody

Western blot analysis of extracts of various cell lines, using ZBTB25 antibody at 1:1000 dilution. Secondary antibody: HRP Goat Anti-Rabbit IgG (H+L) at 1:10000 dilution. Lysates/proteins: 25ug per lane. Blocking buffer: 3% nonfat dry milk in TBST. Detection: ECL Enhanced Kit. Exposure time: 90s.



Immunofluorescence - ZBTB25 Polyclonal Antibody

Immunofluorescence analysis of A549 cells using ZBTB25 antibody. Blue: DAPI for nuclear staining.