

ASPSCR1 Polyclonal Antibody



Catalog Number: 165397

Product name

ASPSCR1 Polyclonal Antibody

Specificity

Human, Mouse, Rat

Antibody description

Polyclonal antibody to ASPSCR1

Preparation

Antigen: Recombinant fusion protein containing a sequence corresponding to amino acids 284-553 of human ASPSCR1 (NP_076988.1).

Formulation

PBS with 0.02% sodium azide, 50% glycerol, pH7.3.

Storage

Store at -20°C. Avoid freeze / thaw cycles.

Clonality

Polyclonal

Ig Type

Rabbit IgG

Applications

WB, IHC, IF, IP

Dilutions

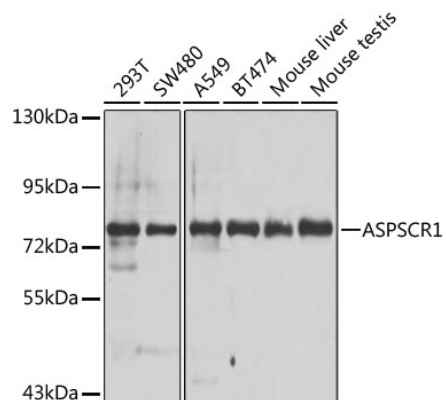
WB 1:500 - 1:2000

IHC 1:50 - 1:200

IF 1:50 - 1:200

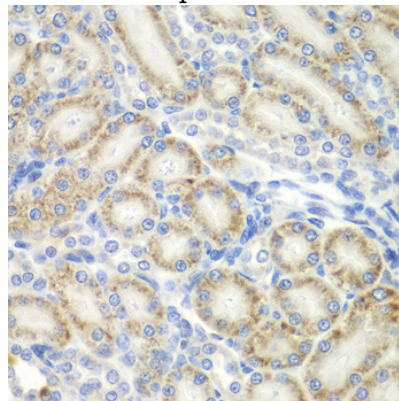
IP 1:50 - 1:100

Validations



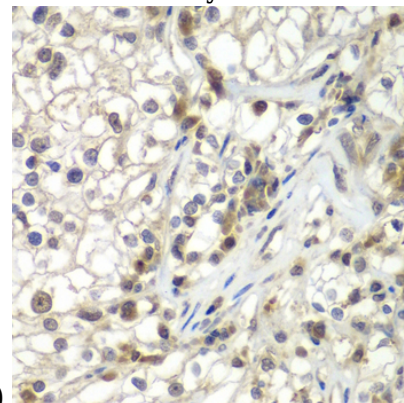
Western blot - ASPSCR1 Polyclonal Antibody

Western blot analysis of extracts of various cell lines, using ASPSCR1 antibody at 1:1000 dilution. Secondary antibody: HRP Goat Anti-Rabbit IgG (H+L) at 1:10000 dilution. Lysates/proteins: 25ug per lane. Blocking buffer: 3% nonfat dry milk in TBST. Detection: ECL Basic Kit. Exposure time: 30s.



Immunohistochemistry - ASPSCR1 Polyclonal Antibody

Immunohistochemistry of paraffin-embedded rat kidney using ASPSCR1 antibody at dilution of



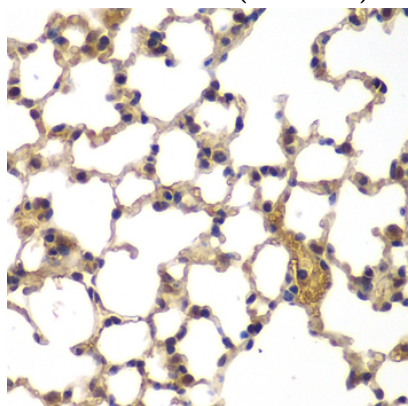
1:100 (40x lens).

ASPSCR1 Polyclonal Antibody

Catalog Number: 165397

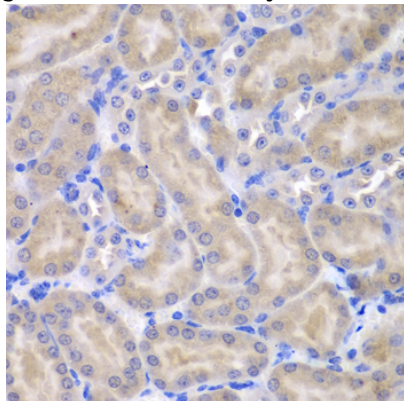
Immunohistochemistry - ASPSCR1 Polyclonal Antibody

Immunohistochemistry of paraffin-embedded human kidney cancer using ASPSCR1 antibody at dilution of 1:100 (40x lens).



Immunohistochemistry - ASPSCR1 Polyclonal Antibody

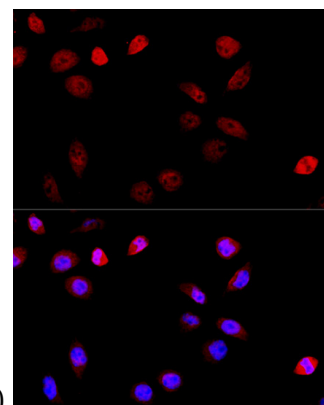
Immunohistochemistry of paraffin-embedded mouse lung using ASPSCR1 antibody at dilution of



1:100 (40x lens).

Immunohistochemistry - ASPSCR1 Polyclonal Antibody

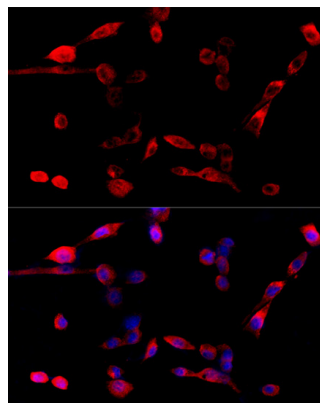
Immunohistochemistry of paraffin-embedded mouse kidney using ASPSCR1 antibody at dilution



of 1:100 (40x lens).

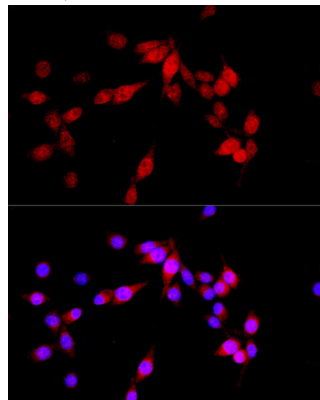
Immunofluorescence - ASPSCR1 Polyclonal Antibody

Immunofluorescence analysis of HeLa cells using ASPSCR1 antibody at dilution of 1:100 (40x lens). Blue: DAPI for nuclear staining.



Immunofluorescence - ASPSCR1 Polyclonal Antibody

Immunofluorescence analysis of NIH/3T3 cells using ASPSCR1 antibody at dilution of 1:100 (40x lens). Blue: DAPI for nuclear staining.



Immunofluorescence - ASPSCR1 Polyclonal Antibody

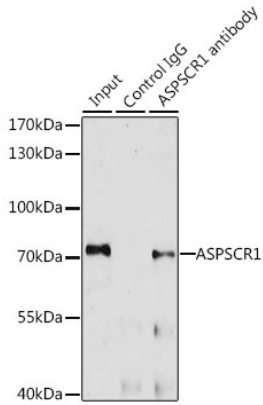
ASPSCR1 Polyclonal Antibody



Catalog Number: 165397

Antibody

Immunofluorescence analysis of PC-12 cells using ASPSCR1 antibody at dilution of 1:100 (40x lens). Blue: DAPI for nuclear staining.



Immunoprecipitation - ASPSCR1 Polyclonal Antibody

Immunoprecipitation analysis of 200ug extracts of A-549 cells, using 3 ug ASPSCR1 antibody . Western blot was performed from the immunoprecipitate using ASPSCR1 antibody at a dilution of 1:1000.