

LDB3 Polyclonal Antibody

Catalog Number: 165380

Product name

LDB3 Polyclonal Antibody

Specificity

Human, Mouse, Rat

Antibody description

Polyclonal antibody to LDB3

Preparation

Antigen: Recombinant fusion protein containing a sequence corresponding to amino acids 1-283 of human LDB3 (NP_001073585.1).

Formulation

PBS with 0.02% sodium azide, 50% glycerol, pH7.3.

Storage

Store at -20°C. Avoid freeze / thaw cycles.

Clonality

Polyclonal

Ig Type

Rabbit IgG

Applications

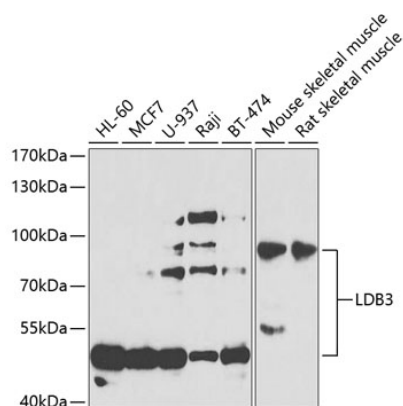
WB, IF

Dilutions

WB 1:500 - 1:2000

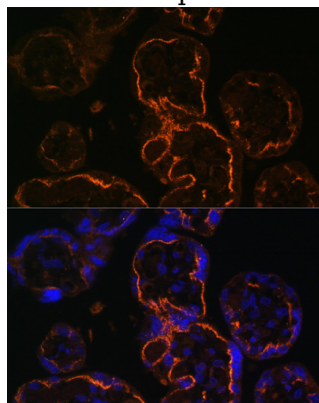
IF 1:50 - 1:200

Validations



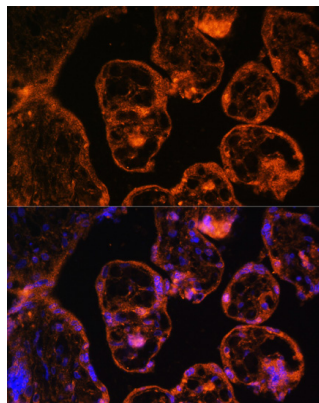
Western blot - LDB3 Polyclonal Antibody

Western blot analysis of extracts of various cell lines, using LDB3 antibody at 1:1000 dilution. Secondary antibody: HRP Goat Anti-Rabbit IgG (H+L) at 1:10000 dilution. Lysates/proteins: 25ug per lane. Blocking buffer: 3% nonfat dry milk in TBST. Detection: ECL Basic Kit. Exposure time: 90s.



Immunofluorescence - LDB3 Polyclonal Antibody

Immunofluorescence analysis of human placenta cells using LDB3 antibody at dilution of 1:100. Blue: DAPI for nuclear staining.

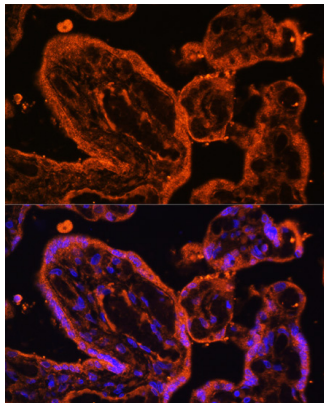


LDB3 Polyclonal Antibody

Catalog Number: 165380

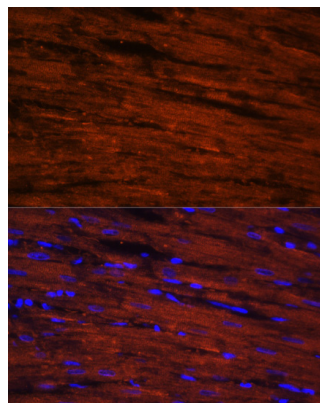
Immunofluorescence - LDB3 Polyclonal Antibody

Immunofluorescence analysis of human placenta cells using LDB3 antibody at dilution of 1:100. Blue: DAPI for nuclear staining.



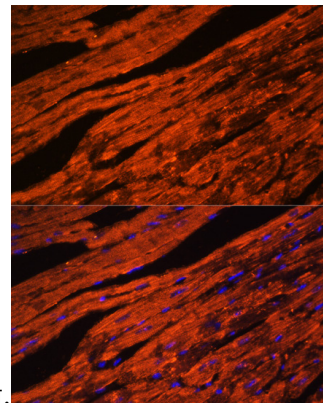
Immunofluorescence - LDB3 Polyclonal Antibody

Immunofluorescence analysis of human placenta cells using LDB3 antibody at dilution of 1:100. Blue: DAPI for nuclear staining.



Immunofluorescence - LDB3 Polyclonal Antibody

Immunofluorescence analysis of rat heart cells using LDB3 antibody at dilution of 1:100. Blue:



DAPI for nuclear staining.
Immunofluorescence - LDB3 Polyclonal Antibody

Immunofluorescence analysis of mouse heart cells using LDB3 antibody at dilution of 1:100. Blue: DAPI for nuclear staining.