

RIPK1 Polyclonal Antibody

Catalog Number: 165356

Product name

RIPK1 Polyclonal Antibody

Specificity

Human, Mouse, Rat

Antibody description

Polyclonal antibody to RIPK1

Preparation

Antigen: Recombinant fusion protein containing a sequence corresponding to amino acids 170-440 of human RIPK1 (NP_003795.2).

Formulation

PBS with 0.02% sodium azide, 50% glycerol, pH7.3.

Storage

Store at -20°C. Avoid freeze / thaw cycles.

Clonality

Polyclonal

Ig Type

Rabbit IgG

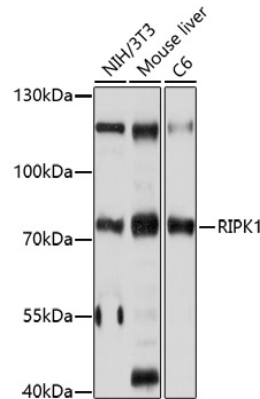
Applications

WB, IHC, IF, IP

Dilutions

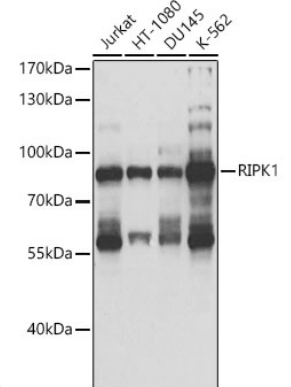
WB 1:500 - 1:2000
IHC 1:50 - 1:200
IF 1:50 - 1:200
IP 1:50 - 1:200

Validations



Western blot - RIPK1 Polyclonal Antibody

Western blot analysis of extracts of various cell lines, using RIPK1 antibody at 1:1000 dilution. Secondary antibody: HRP Goat Anti-Rabbit IgG (H+L) at 1:10000 dilution. Lysates/proteins: 25ug per lane. Blocking buffer: 3% nonfat dry milk in TBST. Detection: ECL



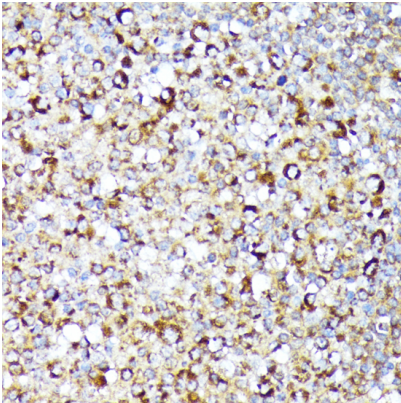
Basic Kit .Exposure time: 10s.

Western blot - RIPK1 Polyclonal Antibody

Western blot analysis of extracts of various cell lines, using RIPK1 antibody at 1:1000 dilution. Secondary antibody: HRP Goat Anti-Rabbit IgG (H+L) at 1:10000 dilution. Lysates/proteins: 25ug per lane. Blocking buffer: 3% nonfat dry milk in TBST. Detection: ECL Basic Kit .Exposure time: 1s.

RIPK1 Polyclonal Antibody

Catalog Number: 165356

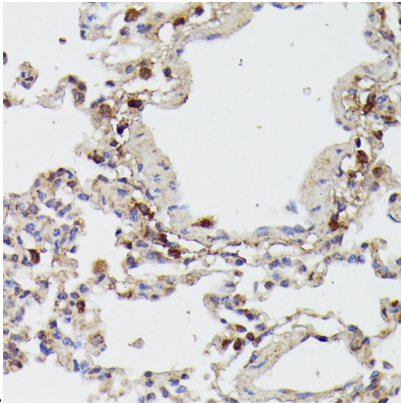


Immunohistochemistry - RIPK1 Polyclonal Antibody

Immunohistochemistry of paraffin-embedded mouse spleen using RIPK1 antibody at dilution of

Immunohistochemistry - RIPK1 Polyclonal Antibody

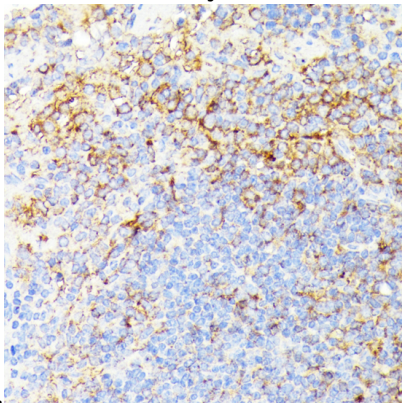
Immunohistochemistry of paraffin-embedded human tonsil using RIPK1 antibody at dilution of



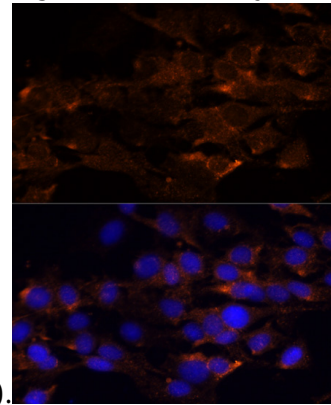
1:100 (40x lens).

Immunohistochemistry - RIPK1 Polyclonal Antibody

Immunohistochemistry of paraffin-embedded rat lung using RIPK1 antibody at dilution of 1:100



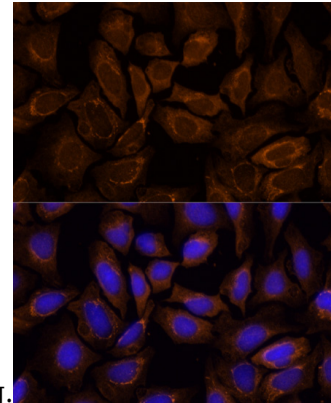
(40x lens).



1:100 (40x lens).

Immunofluorescence - RIPK1 Polyclonal Antibody

Immunofluorescence analysis of C6 cells using RIPK1 antibody at dilution of 1:100. Blue: DAPI for



nuclear staining.

Immunofluorescence - RIPK1 Polyclonal Antibody

Immunofluorescence analysis of U-2 OS cells using RIPK1 antibody at dilution of 1:100. Blue: DAPI for nuclear staining.