

# CSRP2BP Polyclonal Antibody



Catalog Number: 165343

## Product name

CSRP2BP Polyclonal Antibody

## Specificity

Human, Mouse, Rat

## Antibody description

Polyclonal antibody to CSRP2BP

## Preparation

Antigen: Recombinant fusion protein containing a sequence corresponding to amino acids 523-782 of human CSRP2BP (NP\_065397.3).

## Formulation

PBS with 0.02% sodium azide, 50% glycerol, pH7.3.

## Storage

Store at -20°C. Avoid freeze / thaw cycles.

## Clonality

Polyclonal

## Ig Type

Rabbit IgG

## Applications

WB, IHC, IF

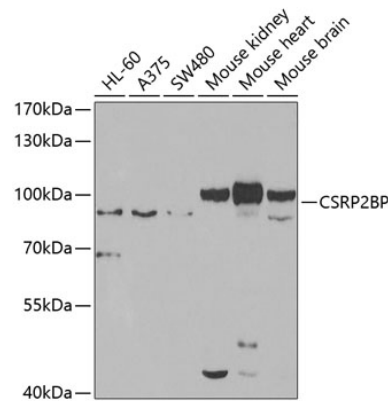
## Dilutions

WB 1:500 - 1:2000

IHC 1:50 - 1:200

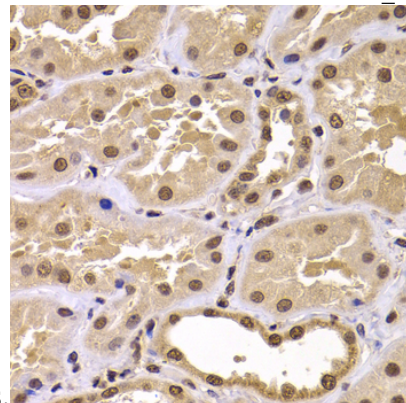
IF 1:50 - 1:200

## Validations



Western blot - CSRP2BP Polyclonal Antibody

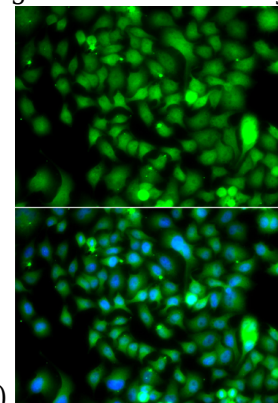
Western blot analysis of extracts of various cell lines, using CSRP2BP antibody at 1:1000 dilution. Secondary antibody: HRP Goat Anti-Rabbit IgG (H+L) at 1:10000 dilution. Lysates/proteins: 25ug per lane. Blocking buffer: 3% nonfat dry milk in TBST. Detection: ECL Enhanced Kit. Exposure



time: 90s.

Immunohistochemistry - CSRP2BP Polyclonal Antibody

Immunohistochemistry of paraffin-embedded human kidney using CSRP2BP antibody at dilution



of 1:100 (40x lens).

# CSR2BP Polyclonal Antibody



Catalog Number: 165343

---

Immunofluorescence - CSR2BP Polyclonal Antibody

Immunofluorescence analysis of A549 cells using CSR2BP antibody . Blue: DAPI for nuclear staining.