

# SUPT20H Polyclonal Antibody



Catalog Number: 165337

## Product name

SUPT20H Polyclonal Antibody

## Specificity

Human, Mouse, Rat

## Antibody description

Polyclonal antibody to SUPT20H

## Preparation

Antigen: Recombinant fusion protein containing a sequence corresponding to amino acids 580-779 of human SUPT20H (NP\_001014308.2).

## Formulation

PBS with 0.02% sodium azide, 50% glycerol, pH7.3.

## Storage

Store at -20°C. Avoid freeze / thaw cycles.

## Clonality

Polyclonal

## Ig Type

Rabbit IgG

## Applications

WB, IHC, IF

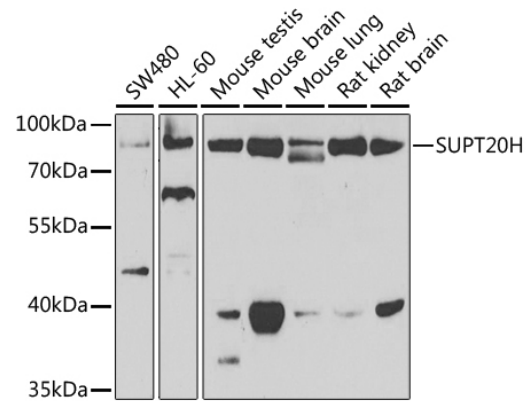
## Dilutions

WB 1:500 - 1:2000

IHC 1:50 - 1:200

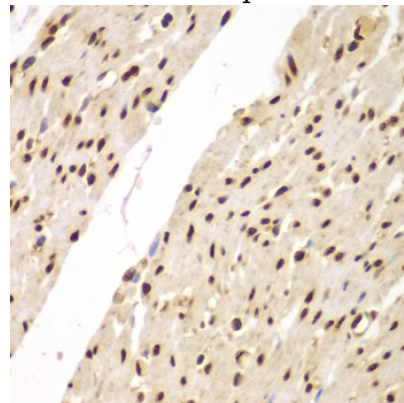
IF 1:50 - 1:200

## Validations



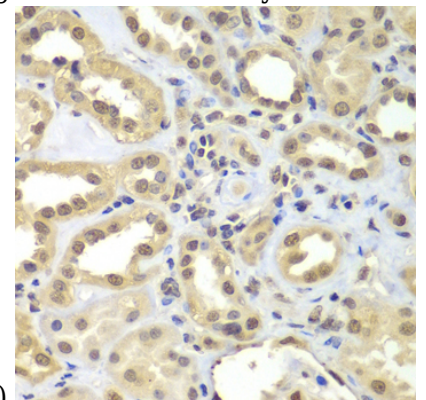
Western blot - SUPT20H Polyclonal Antibody

Western blot analysis of extracts of various cell lines, using SUPT20H antibody at 1:1000 dilution. Secondary antibody: HRP Goat Anti-Rabbit IgG (H+L) at 1:10000 dilution. Lysates/proteins: 25ug per lane. Blocking buffer: 3% nonfat dry milk in TBST. Detection: ECL Enhanced Kit. Exposure time: 90s.



Immunohistochemistry - SUPT20H Polyclonal Antibody

Immunohistochemistry of paraffin-embedded human colon using SUPT20H antibody at dilution



of 1:100 (40x lens).

# SUPT20H Polyclonal Antibody

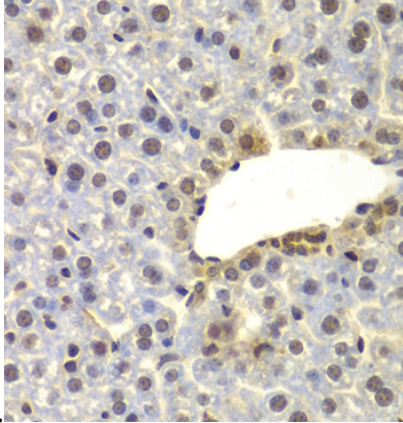


Catalog Number: 165337

---

Immunohistochemistry - SUPT20H Polyclonal Antibody

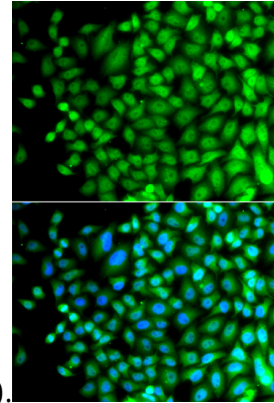
Immunohistochemistry of paraffin-embedded human kidney using SUPT20H antibody at dilution



of 1:100 (40x lens).

Immunohistochemistry - SUPT20H Polyclonal Antibody

Immunohistochemistry of paraffin-embedded mouse liver using SUPT20H antibody at dilution of



1:100 (40x lens).

Immunofluorescence - SUPT20H Polyclonal Antibody

Immunofluorescence analysis of A549 cells using SUPT20H antibody . Blue: DAPI for nuclear staining.