

LZTR1 Polyclonal Antibody



Catalog Number: 165323

Product name

LZTR1 Polyclonal Antibody

Specificity

Human, Mouse, Rat

Antibody description

Polyclonal antibody to LZTR1

Preparation

Antigen: Recombinant fusion protein containing a sequence corresponding to amino acids 300-545 of human LZTR1 (NP_006758.2).

Formulation

PBS with 0.02% sodium azide, 50% glycerol, pH7.3.

Storage

Store at -20°C. Avoid freeze / thaw cycles.

Clonality

Polyclonal

Ig Type

Rabbit IgG

Applications

WB, IHC, IF

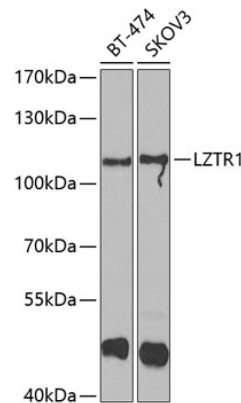
Dilutions

WB 1:500 - 1:2000

IHC 1:50 - 1:200

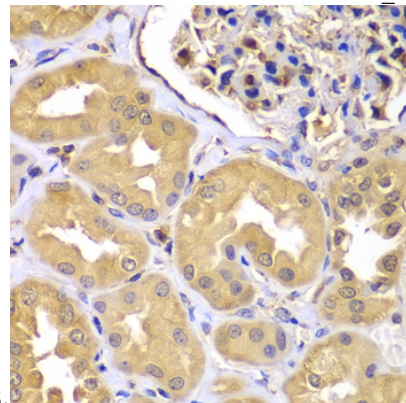
IF 1:50 - 1:200

Validations



Western blot - LZTR1 Polyclonal Antibody

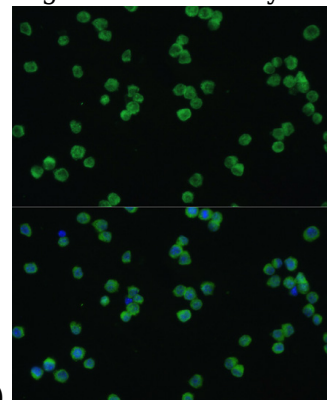
Western blot analysis of extracts of various cell lines, using LZTR1 antibody at 1:1000 dilution. Secondary antibody: HRP Goat Anti-Rabbit IgG (H+L) at 1:10000 dilution. Lysates/proteins: 25ug per lane. Blocking buffer: 3% nonfat dry milk in TBST. Detection: ECL Enhanced Kit. Exposure



time: 90s.

Immunohistochemistry - LZTR1 Polyclonal Antibody

Immunohistochemistry of paraffin-embedded human kidney using LZTR1 antibody at dilution of



1:100 (40x lens).

LZTR1 Polyclonal Antibody



Catalog Number: 165323

Immunofluorescence - LZTR1 Polyclonal Antibody

using LZTR1 antibody at dilution of 1:100. Blue:
DAPI for nuclear staining.

Immunofluorescence analysis of Raw264.7 cells