

ZNF20 Polyclonal Antibody



Catalog Number: 165322

Product name

ZNF20 Polyclonal Antibody

Specificity

Human, Mouse, Rat

Antibody description

Polyclonal antibody to ZNF20

Preparation

Antigen: Recombinant fusion protein containing a sequence corresponding to amino acids 1-200 of human ZNF20 (NP_066966.2).

Formulation

PBS with 0.02% sodium azide, 50% glycerol, pH7.3.

Storage

Store at -20°C. Avoid freeze / thaw cycles.

Clonality

Polyclonal

Ig Type

Rabbit IgG

Applications

WB, IHC, IF

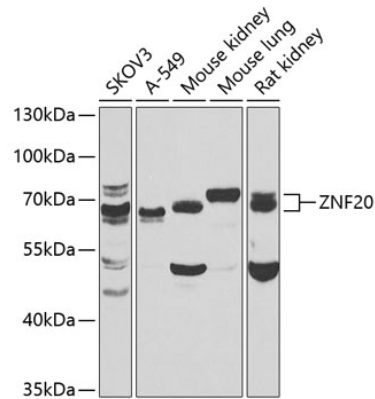
Dilutions

WB 1:500 - 1:2000

IHC 1:50 - 1:200

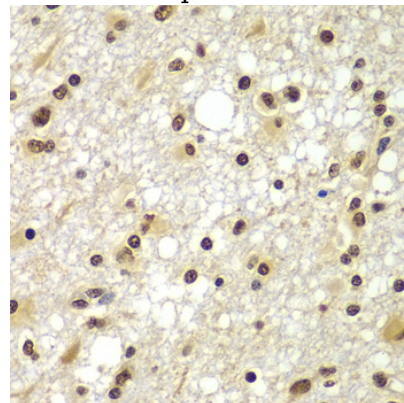
IF 1:50 - 1:200

Validations



Western blot - ZNF20 Polyclonal Antibody

Western blot analysis of extracts of various cell lines, using ZNF20 antibody at 1:1000 dilution. Secondary antibody: HRP Goat Anti-Rabbit IgG (H+L) at 1:10000 dilution. Lysates/proteins: 25ug per lane. Blocking buffer: 3% nonfat dry milk in TBST. Detection: ECL Basic Kit. Exposure time: 30s.



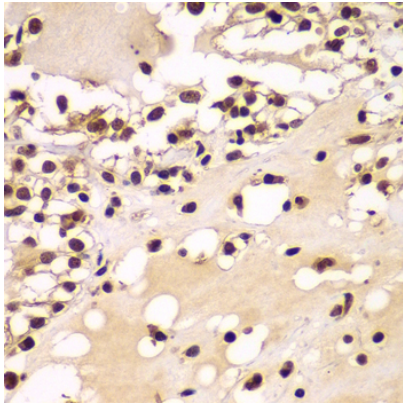
Immunohistochemistry - ZNF20 Polyclonal Antibody

Immunohistochemistry of paraffin-embedded human brain cancer using ZNF20 antibody at dilution of 1:100 (40x lens).

ZNF20 Polyclonal Antibody



Catalog Number: 165322



Immunohistochemistry - ZNF20 Polyclonal Antibody

Immunohistochemistry of paraffin-embedded human kidney cancer using ZNF20 antibody at dilution of 1:100 (40x lens).