

WBSCR22 Polyclonal Antibody



Catalog Number: 165307

Product name

WBSCR22 Polyclonal Antibody

Specificity

Human, Rat

Antibody description

Polyclonal antibody to WBSCR22

Preparation

Antigen: Recombinant fusion protein containing a sequence corresponding to amino acids 1-281 of human WBSCR22 (NP_059998.2).

Formulation

PBS with 0.02% sodium azide, 50% glycerol, pH7.3.

Storage

Store at -20°C. Avoid freeze / thaw cycles.

Clonality

Polyclonal

Ig Type

Rabbit IgG

Applications

WB, IHC, IF

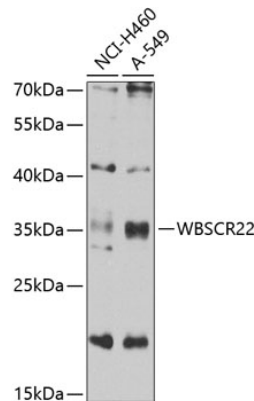
Dilutions

WB 1:500 - 1:2000

IHC 1:50 - 1:200

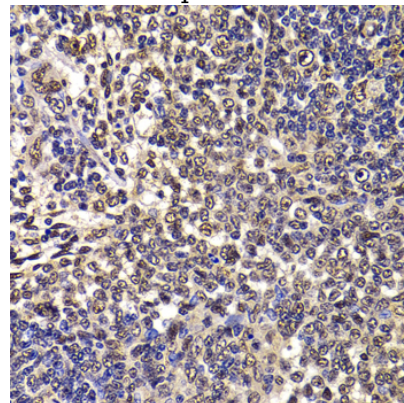
IF 1:50 - 1:100

Validations



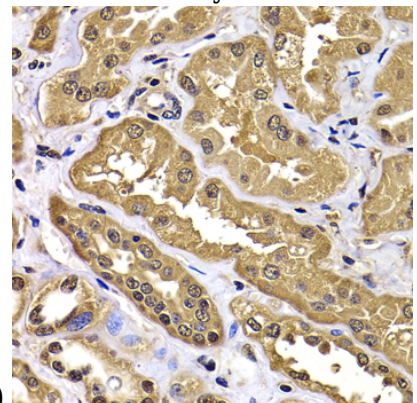
Western blot - WBSCR22 Polyclonal Antibody

Western blot analysis of extracts of various cell lines, using WBSCR22 antibody at 1:1000 dilution. Secondary antibody: HRP Goat Anti-Rabbit IgG (H+L) at 1:10000 dilution. Lysates/proteins: 25ug per lane. Blocking buffer: 3% nonfat dry milk in TBST. Detection: ECL Basic Kit. Exposure time: 30s.



Immunohistochemistry - WBSCR22 Polyclonal Antibody

Immunohistochemistry of paraffin-embedded rat spleen using WBSCR22 antibody at dilution of



1:100 (40x lens).

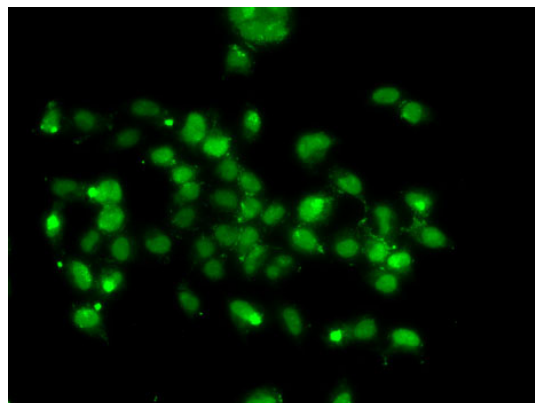
WBSCR22 Polyclonal Antibody



Catalog Number: 165307

Immunohistochemistry - WBSCR22 Polyclonal Antibody

Immunohistochemistry of paraffin-embedded human kidney using WBSCR22 antibody at dilution of 1:100 (40x lens).



Immunofluorescence - WBSCR22 Polyclonal Antibody

Immunofluorescence analysis of A-549 cells using WBSCR22 antibody .