

# L3MBTL3 Polyclonal Antibody



Catalog Number: 165293

## Product name

L3MBTL3 Polyclonal Antibody

## Specificity

Human, Mouse

## Antibody description

Polyclonal antibody to L3MBTL3

## Preparation

Antigen: Recombinant fusion protein containing a sequence corresponding to amino acids 1-230 of human L3MBTL3 (NP\_001007103.1).

## Formulation

PBS with 0.02% sodium azide, 50% glycerol, pH7.3.

## Storage

Store at -20°C. Avoid freeze / thaw cycles.

## Clonality

Polyclonal

## Ig Type

Rabbit IgG

## Applications

WB, IF, IP

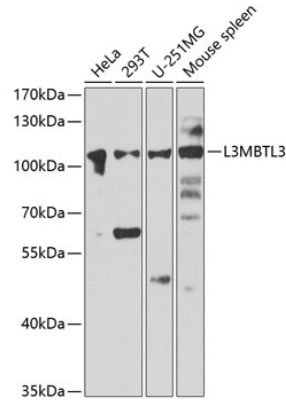
## Dilutions

WB 1:500 - 1:2000

IF 1:50 - 1:100

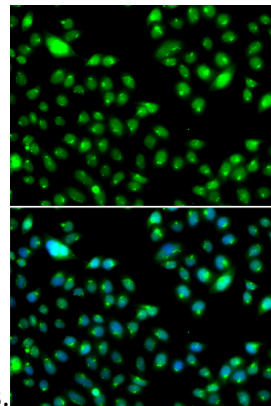
IP 1:50 - 1:200

## Validations



Western blot - L3MBTL3 Polyclonal Antibody

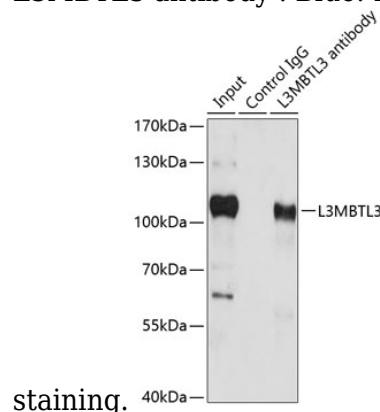
Western blot analysis of extracts of various cell lines, using L3MBTL3 antibody at 1:1000 dilution. Secondary antibody: HRP Goat Anti-Rabbit IgG (H+L) at 1:10000 dilution. Lysates/proteins: 25ug per lane. Blocking buffer: 3% nonfat dry milk in TBST. Detection: ECL Enhanced Kit. Exposure



time: 30s.

Immunofluorescence - L3MBTL3 Polyclonal Antibody

Immunofluorescence analysis of MCF-7 cells using L3MBTL3 antibody. Blue: DAPI for nuclear



staining.

# L3MBTL3 Polyclonal Antibody



Catalog Number: 165293

---

Immunoprecipitation - L3MBTL3 Polyclonal  
Antibody

Immunoprecipitation analysis of 200ug extracts of

HeLa cells using 1ug L3MBTL3 antibody .  
Western blot was performed from the  
immunoprecipitate using L3MBTL3 antibody at a  
diltion of 1:1000.