

# RSRC1 Polyclonal Antibody

Catalog Number: 165253

## Product name

RSRC1 Polyclonal Antibody

## Specificity

Human, Mouse, Rat

## Antibody description

Polyclonal antibody to RSRC1

## Preparation

Antigen: Recombinant fusion protein containing a sequence corresponding to amino acids 117-276 of human RSRC1 (NP\_001258763.1).

## Formulation

PBS with 0.02% sodium azide, 50% glycerol, pH7.3.

## Storage

Store at -20°C. Avoid freeze / thaw cycles.

## Clonality

Polyclonal

## Ig Type

Rabbit IgG

## Applications

WB, IHC, IF

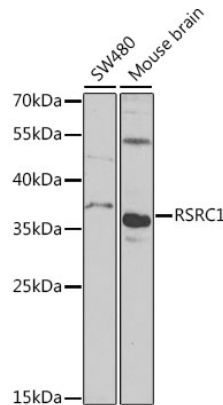
## Dilutions

WB 1:500 - 1:2000

IHC 1:50 - 1:100

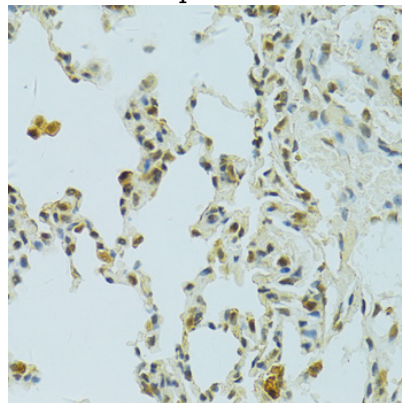
IF 1:50 - 1:100

## Validations



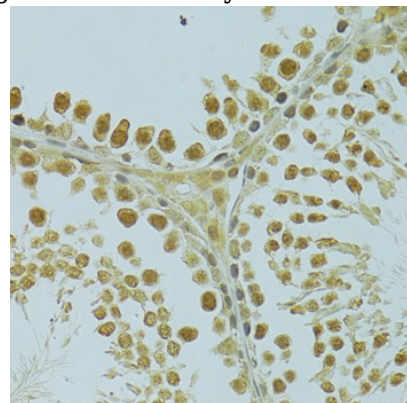
Western blot - RSRC1 Polyclonal Antibody

Western blot analysis of extracts of various cell lines, using RSRC1 antibody at 1:1000 dilution. Secondary antibody: HRP Goat Anti-Rabbit IgG (H+L) at 1:10000 dilution. Lysates/proteins: 25ug per lane. Blocking buffer: 3% nonfat dry milk in TBST. Detection: ECL Basic Kit. Exposure time: 90s.



Immunohistochemistry - RSRC1 Polyclonal Antibody

Immunohistochemistry of paraffin-embedded rat lung using RSRC1 antibody at dilution of 1:100



(40x lens).

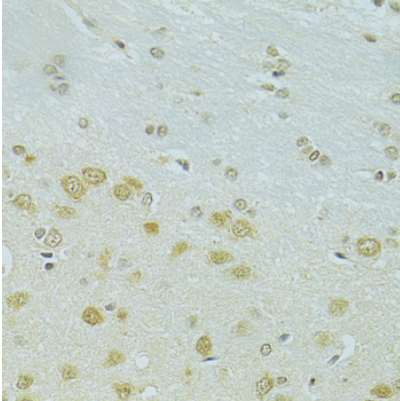
# RSRC1 Polyclonal Antibody



Catalog Number: 165253

## Immunohistochemistry - RSRC1 Polyclonal Antibody

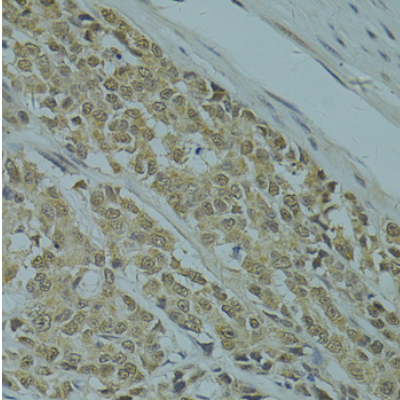
Immunohistochemistry of paraffin-embedded rat testis using RSRC1 antibody at dilution of 1:100



(40x lens).

## Immunohistochemistry - RSRC1 Polyclonal Antibody

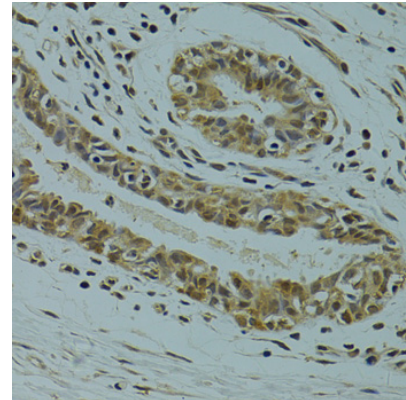
Immunohistochemistry of paraffin-embedded rat brain using RSRC1 antibody at dilution of 1:100



(40x lens).

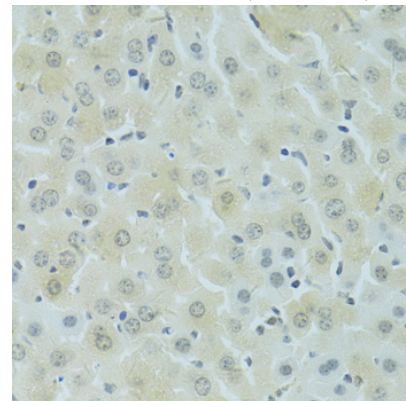
## Immunohistochemistry - RSRC1 Polyclonal Antibody

Immunohistochemistry of paraffin-embedded human colon carcinoma using RSRC1 antibody at dilution of 1:100 (40x lens).



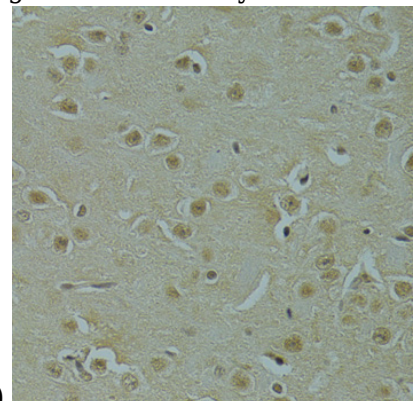
## Immunohistochemistry - RSRC1 Polyclonal Antibody

Immunohistochemistry of paraffin-embedded human breast cancer using RSRC1 antibody at dilution of 1:100 (40x lens).



## Immunohistochemistry - RSRC1 Polyclonal Antibody

Immunohistochemistry of paraffin-embedded mouse liver using RSRC1 antibody at dilution of



1:100 (40x lens).

## Immunohistochemistry - RSRC1 Polyclonal Antibody

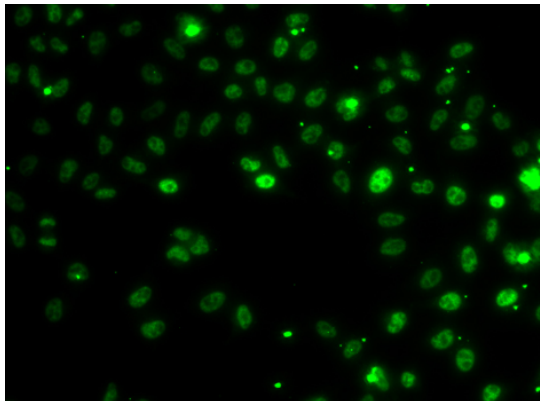
# RSRC1 Polyclonal Antibody



Catalog Number: 165253

---

Immunohistochemistry of paraffin-embedded mouse brain using RSRC1 antibody at dilution of 1:100 (40x lens).



Immunofluorescence - RSRC1 Polyclonal Antibody

Immunofluorescence analysis of MCF-7 cells using RSRC1 antibody .