

KLF3 Polyclonal Antibody



Catalog Number: 165245

Product name

KLF3 Polyclonal Antibody

Specificity

Human

Antibody description

Polyclonal antibody to KLF3

Preparation

Antigen: Recombinant fusion protein containing a sequence corresponding to amino acids 1-240 of human KLF3 (NP_057615.3).

Formulation

PBS with 0.02% sodium azide, 50% glycerol, pH7.3.

Storage

Store at -20°C. Avoid freeze / thaw cycles.

Clonality

Polyclonal

Ig Type

Rabbit IgG

Applications

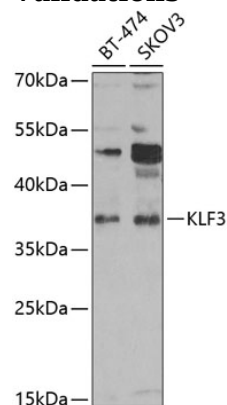
WB, IF

Dilutions

WB 1:500 - 1:2000

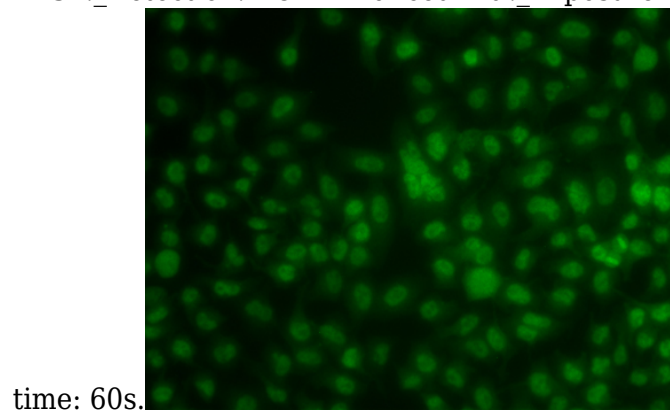
IF 1:50 - 1:100

Validations



Western blot - KLF3 Polyclonal Antibody

Western blot analysis of extracts of various cell lines, using KLF3 antibody at 1:1000 dilution. Secondary antibody: HRP Goat Anti-Rabbit IgG (H+L) at 1:10000 dilution. Lysates/proteins: 25ug per lane. Blocking buffer: 3% nonfat dry milk in TBST. Detection: ECL Enhanced Kit. Exposure



time: 60s.

Immunofluorescence - KLF3 Polyclonal Antibody

Immunofluorescence analysis of A549 cells using KLF3 antibody.