

KIAA1456 Polyclonal Antibody



Catalog Number: 165244

Product name

KIAA1456 Polyclonal Antibody

Specificity

Human, Mouse, Rat

Antibody description

Polyclonal antibody to KIAA1456

Preparation

Antigen: Recombinant fusion protein containing a sequence corresponding to amino acids 110-330 of human KIAA1456 (NP_065895.2).

Formulation

PBS with 0.02% sodium azide, 50% glycerol, pH7.3.

Storage

Store at -20°C. Avoid freeze / thaw cycles.

Clonality

Polyclonal

Ig Type

Rabbit IgG

Applications

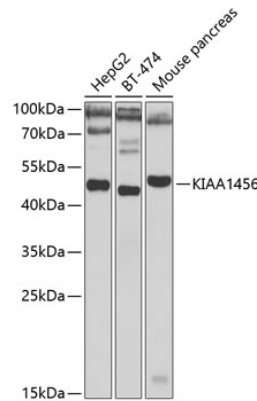
WB, IHC

Dilutions

WB 1:500 - 1:2000

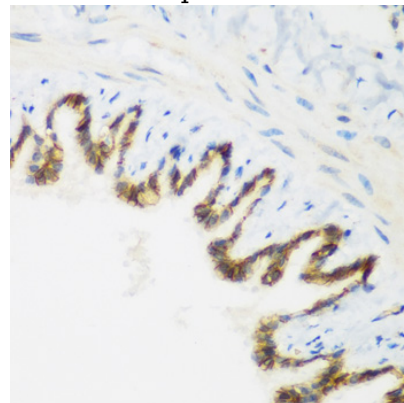
IHC 1:50 - 1:200

Validations



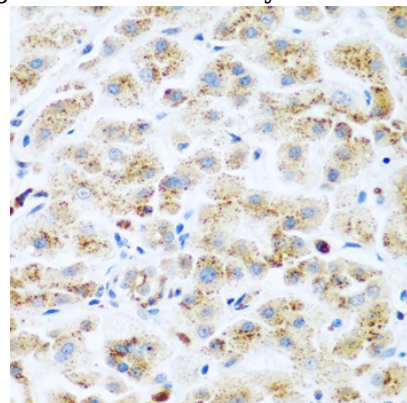
Western blot - KIAA1456 Polyclonal Antibody

Western blot analysis of extracts of various cell lines, using KIAA1456 antibody at 1:1000 dilution. Secondary antibody: HRP Goat Anti-Rabbit IgG (H+L) at 1:10000 dilution. Lysates/proteins: 25ug per lane. Blocking buffer: 3% nonfat dry milk in TBST. Detection: ECL Basic Kit. Exposure time: 60s.



Immunohistochemistry - KIAA1456 Polyclonal Antibody

Immunohistochemistry of paraffin-embedded rat lung using KIAA1456 antibody at dilution of 1:200



(40x lens).

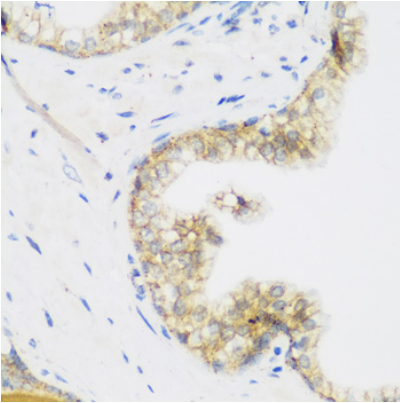
KIAA1456 Polyclonal Antibody



Catalog Number: 165244

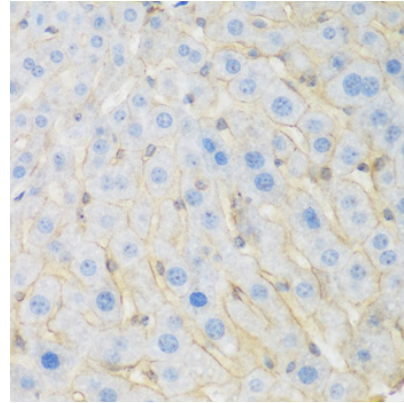
Immunohistochemistry - KIAA1456 Polyclonal Antibody

Immunohistochemistry of paraffin-embedded human liver cancer using KIAA1456 antibody at dilution of 1:200 (40x lens).



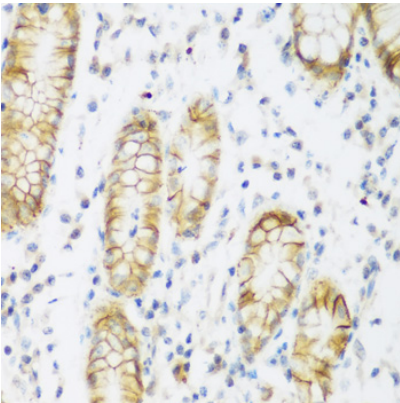
Immunohistochemistry - KIAA1456 Polyclonal Antibody

Immunohistochemistry of paraffin-embedded human stomach using KIAA1456 antibody at dilution of 1:200 (40x lens).



Immunohistochemistry - KIAA1456 Polyclonal Antibody

Immunohistochemistry of paraffin-embedded human prostate using KIAA1456 antibody at dilution of 1:200 (40x lens).



Immunohistochemistry - KIAA1456 Polyclonal Antibody

Immunohistochemistry of paraffin-embedded mouse liver using KIAA1456 antibody at dilution of 1:200 (40x lens).