

# PI4K2A Polyclonal Antibody



Catalog Number: 165227

## Product name

PI4K2A Polyclonal Antibody

## Specificity

Human

## Antibody description

Polyclonal antibody to PI4K2A

## Preparation

Antigen: A synthetic peptide of human PI4K2A

## Formulation

PBS with 0.02% sodium azide, pH7.3.

## Storage

Store at 4°C. Avoid freeze / thaw cycles.

## Clonality

Polyclonal

## Ig Type

Rabbit IgG

## Applications

WB, IHC, IF

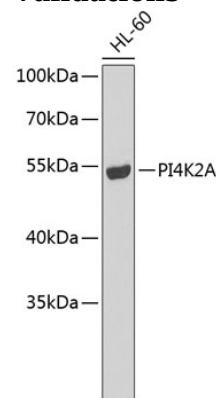
## Dilutions

WB 1:500 - 1:1000

IHC 1:50 - 1:100

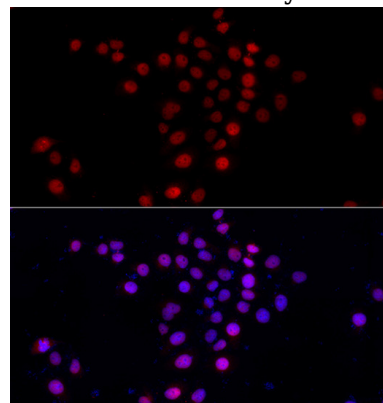
IF 1:20 - 1:100

## Validations



Western blot - PI4K2A Polyclonal Antibody

Western blot analysis of extracts of HL-60 cells, using PI4K2A antibody. Secondary antibody: HRP Goat Anti-Rabbit IgG (H+L) at 1:10000 dilution. Lysates/proteins: 25ug per lane. Blocking buffer: 3% nonfat dry milk in TBST.



Immunofluorescence - PI4K2A Polyclonal Antibody

Immunofluorescence analysis of HeLa cells using PI4K2A antibody. Blue: DAPI for nuclear staining.